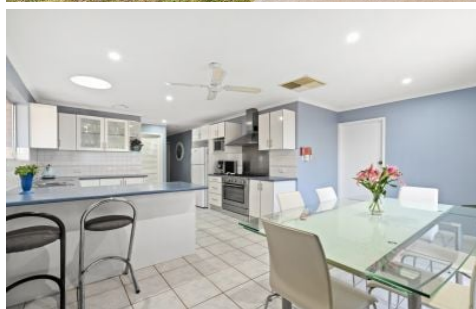


MAGAIN



36 Rogana Crescent Hallett Cove SA

6 2 1

Please contact Danielle Comer or Rachael Farror for viewing times.

Perfectly positioned to take advantage of the lovely views over the stunning Southern coastline, this stylish family home with approx. 291 sqm of internal living has wonderful curb-side appeal and is located on a quiet street only minutes from the popular clifftop views and walking trails along the Hallett Cove Conservation Park.

Seriously impressive, this wonderful two-story home offers a neutral palette, a combination of carpets and stunning tiled floors, and surrounding windows to let in an abundance of natural light allowing that connection to the outside world - it really

[For full version visit the website](https://www.magain.com.au/property/36-rogana-crescent-hallett-cove-sa/7439557)

Type : House
Price : \$ 770,000
Building Size : 291 sqm
Land Size : 678 sqm
View : <https://www.magain.com.au/property/36-rogana-crescent-hallett-cove-sa/7439557>

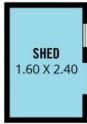


Danielle Comer
08 8222 6111

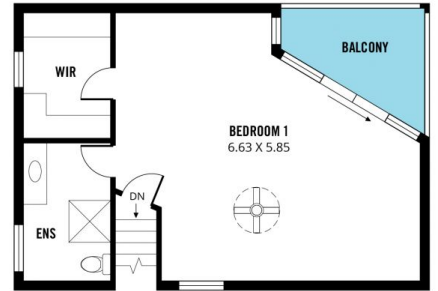


Rachael Farror
08 8222 6111

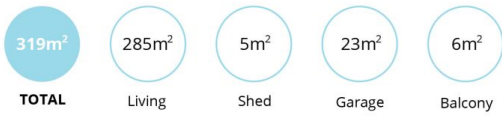
<https://www.magain.com.au>
Magain Real Estate



LOWER FLOOR



UPPER FLOOR



Scale in metres. This drawing is for illustration purposes only. All measurements are approximate and details intended to be relied upon should be independently verified.

Produced by The Fotobase Group