

MAGAIN



4 Barbara Avenue Morphett Vale SA

3  **1**  **1** 

Please call Craig Thomson for more information.

Situated on a generous and relatively flat 760m2 allotment with a commanding frontage this tightly held 3 bedroom home is perfect for those wanting to nest or invest.

What we love about this property:

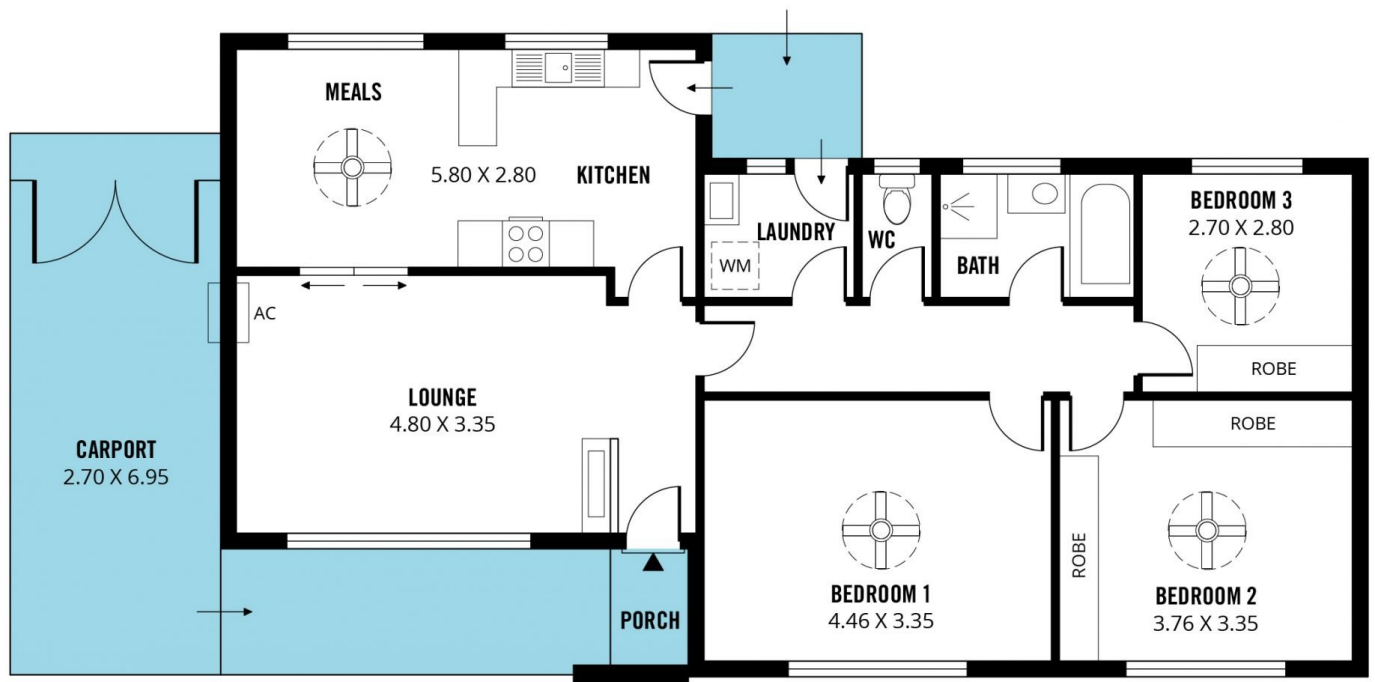
- Good sized allotment.
- The master bedroom is large.
- Nice big backyard.
- Access through to a shed.
- Close to shops and amenities.
- Close to bus stops and public transport
- Close to the Emu hotel.
- Plenty of parks to enjoy nearby.

[For full version visit the website](https://www.magain.com.au/property/4-barbara-avenue-morphett-vale-sa/7444864)

Type : House
Price : \$ 482,500
Land Size : 760 sqm
View : <https://www.magain.com.au/property/4-barbara-avenue-morphett-vale-sa/7444864>



Craig Thomson
08 8366 2292



Scale in metres. This drawing is for illustration purposes only. All measurements are approximate and details intended to be relied upon should be independently verified.

Produced by **The Fotobase Group**