

MAGAIN



11 Sussex Crescent Morphett Vale SA

3 2 2

Please call Craig Thomson or Andrew Robey for all your property advice.

Ideally located in the heart of Morphett Vale and being close to shops, parks and public transport this 3 bedroom 2 bathroom home is going to be on many of buyers short lists.

This home has been tightly held and well maintained with updates to the kitchen and flooring along the way. There's plenty of space in this home with the additional living area so unlike many other 3 bedrooms on the market today you'll have plenty of space for the kids.

This one won't last long so contact Craig or Andrew today

[For full version visit the website](https://www.magain.com.au/property/11-sussex-crescent-morphett-vale-sa/7584094)

Type : House
Price : \$ 595,000
Building Size : 154 sqm
Land Size : 696 sqm
View : <https://www.magain.com.au/property/11-sussex-crescent-morphett-vale-sa/7584094>

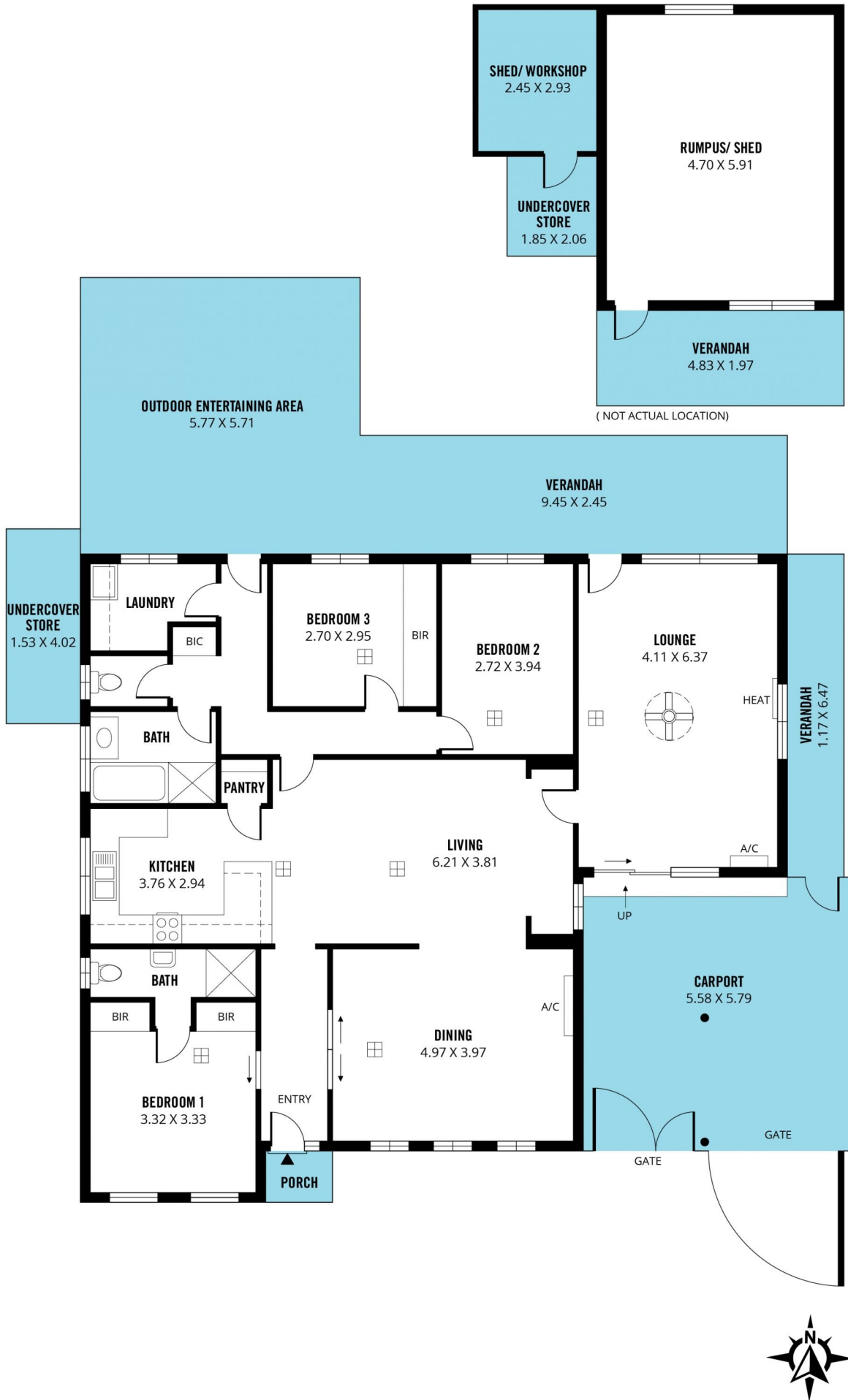


Craig Thomson
08 8266 2292



Andrew Robey
08 8266 2292

<https://www.magain.com.au>
Magain Real Estate



Scale in metres. This drawing is for illustration purposes only. All measurements are approximate and details intended to be relied upon should be independently verified.

Produced by **The Fotobase Group**