

MAGAIN



7 South Park Way McLaren Vale SA

3 2 2

Please contact David for all your property advice.

An extremely well presented and maintained home close to a reserve & a short stroll to the Main Street...

This immaculately maintained home is located in a quiet section of McLaren Vale close to fantastic reserve and only a short stroll to the main Street. This property has a lovely feel to it and is worth some serious consideration.

This home has an Australian homestead façade with a return verandah and an easy care front yard that gives an impressive street appeal. There is a single driveway that leads to a side gate that provides drive through capability to the rear yard and direct access into a 5m x 7m

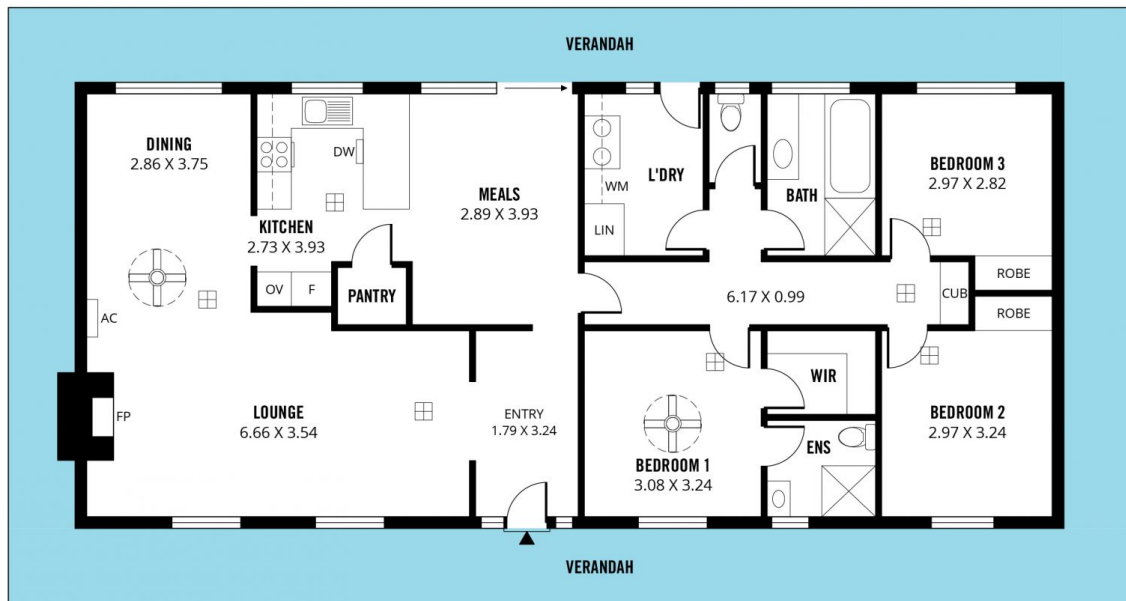
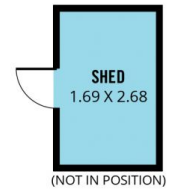
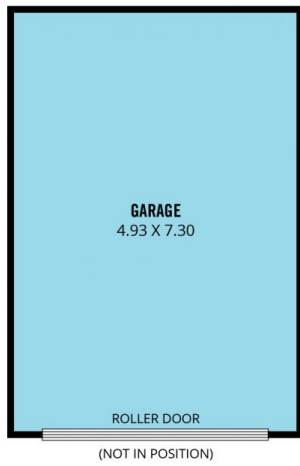
Type : House
Price : \$ 760,000
Building Size : 158 sqm
Land Size : 853 sqm
View : <https://www.magain.com.au/property/7-south-park-way-mclaren-vale-sa/7585297>



David Hams
08 8366 2230

[For full version visit the website](https://www.magain.com.au)

<https://www.magain.com.au>
Magain Real Estate



Scale in metres. This drawing is for illustration purposes only. All measurements are approximate and details intended to be relied upon should be independently verified.

Produced by **The Fotobase Group**