

MAGAIN



10 Monterey Avenue Morphett Vale SA

4 1 2

Please contact Travis Denham and Michelle Draper for all your property advice.

Positioned on a generous 660 sqm block (approx.), with a family friendly backyard inclusive of a delightful, outdoor entertainment area, this property is simply packed with features you'll be sure to love. Featuring a functional and spacious floorplan, and within close proximity to local amenities such as shops and schools, not to mention Nash Crescent Park just opposite the property. This presents as the perfect place for your growing family to call home.

Entering into the home, it is hard to ignore the warm and welcoming ambiance that this home embodies, with timber-style flooring, and large picture windows featured

[For full version visit the website](https://www.magain.com.au/property/10-monterey-avenue-morphett-vale-sa/7603227)

Type	: House
Price	: \$ 590,000
Building Size	: 131 sqm
Land Size	: 660 sqm
View	: https://www.magain.com.au/property/10-monterey-avenue-morphett-vale-sa/7603227



Travis Denham
08 8298 1494



Michelle Draper
08 8298 1494

<https://www.magain.com.au>
Magain Real Estate



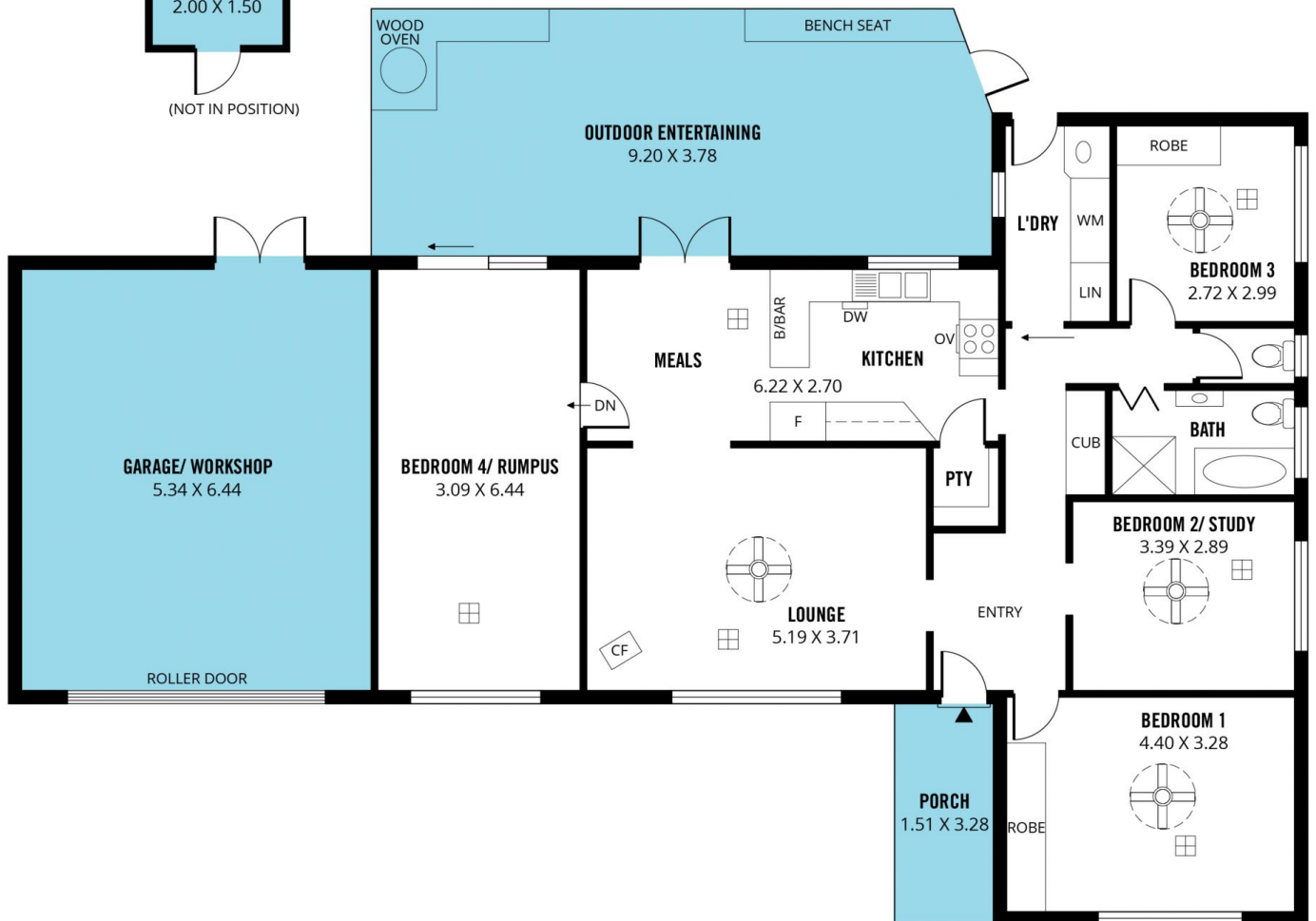
(NOT IN POSITION)

VINE COVERED PERGOLA
3.00 X 2.00

(NOT IN POSITION)



(NOT IN POSITION)



Scale in metres. This drawing is for illustration purposes only. All measurements are approximate and details intended to be relied upon should be independently verified.

Produced by **The Fotobase Group**