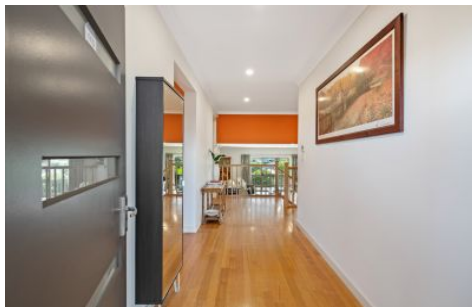


# MAGAIN



## 10 Corrimal Avenue Noarlunga Downs SA

3 2 2

Please contact Scott for all your property advice.

Welcome to this stunning split-level home, a true masterpiece that exudes elegance and comfort. As you step inside, you'll be greeted by high ceilings, accentuated by the warm glow of downlights and real timber floors, creating a welcoming atmosphere that sets the tone for the rest of the house.

One of the highlights of this property is the breathtaking view of Port Noarlunga from the rear decking. Imagine enjoying your mornings and evenings with that incredible, mesmerising scenery right at your doorstep. The master suite is beautifully grand, offering not only remarkable views but also direct access to the balcony, perfect for

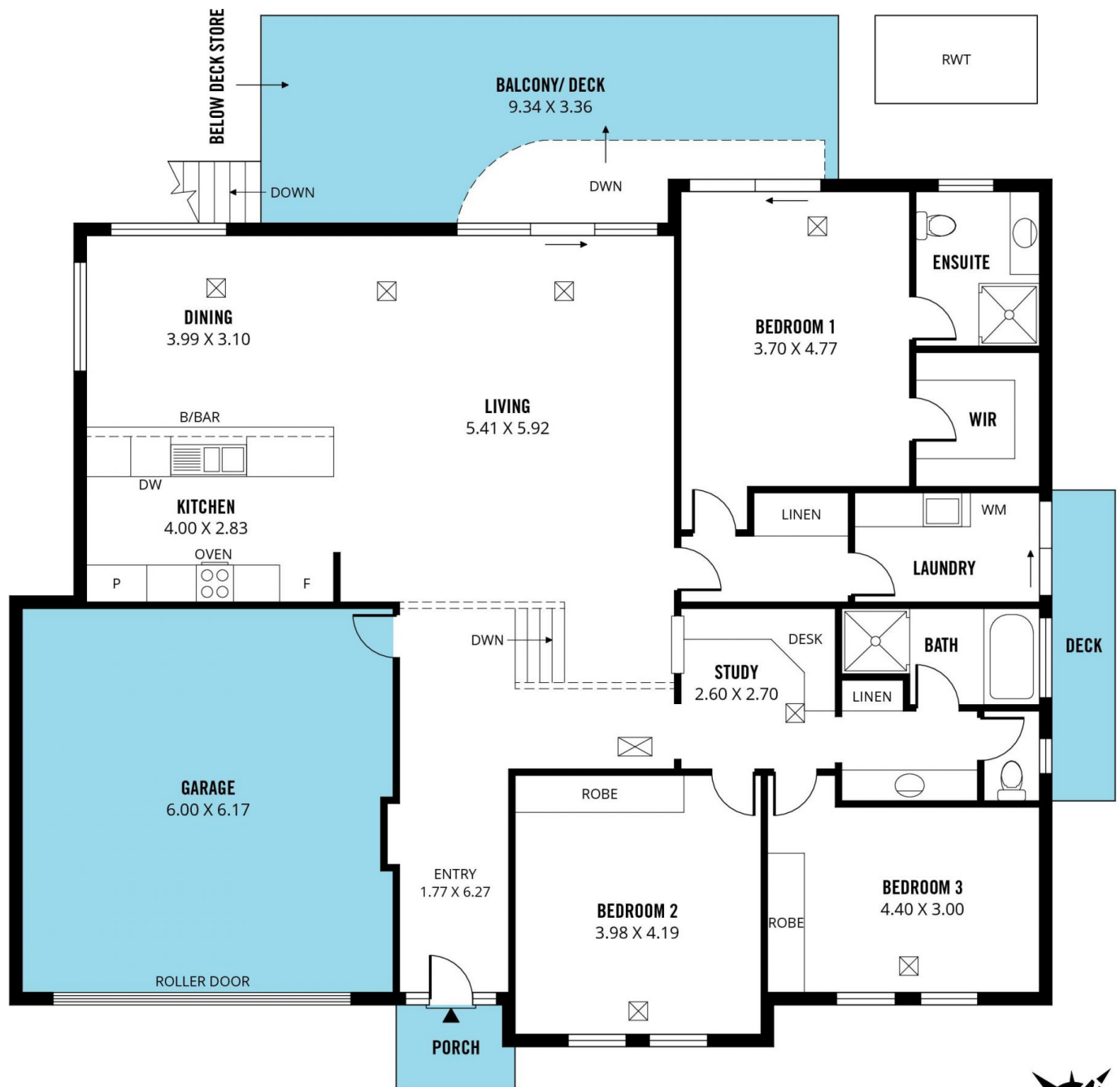
<b>Type</b>	: House
<b>Price</b>	: \$ 905,000
<b>Building Size</b>	: 203 sqm
<b>Land Size</b>	: 774 sqm
<b>View</b>	: <a href="https://www.magain.com.au/property/10-corrimal-avenue-noarlunga-downs-sa/7662772">https://www.magain.com.au/property/10-corrimal-avenue-noarlunga-downs-sa/7662772</a>



**Scott McPharlin**  
08 8282 8828

[For full version visit the website](https://www.magain.com.au)

<https://www.magain.com.au>  
Magain Real Estate



Scale in metres. This drawing is for illustration purposes only. All measurements are approximate and details intended to be relied upon should be independently verified.

Produced by **The Fotobase Group**