

# MAGAIN



## 10/48 Partridge Street Glenelg SA

2 1

Travis Denham and Michelle Draper proudly present to the market, this delightful two-bedroom unit located at 10/48 Partridge Street, Glenelg.

Entering the home, it is simply hard to ignore the warm ambience that this home exudes; featuring stunning timber style flooring complemented by large picture windows throughout the home.

The formal living area presents as the perfect spot to sit and enjoy your favourite films during those colder Winter months, or just unwind at the end of the day of a busy day.

Moving through the home, you will find the open-plan kitchen and meals area, where the master chef of the home

<b>Type</b>	: Unit
<b>Price</b>	: \$ 500,000
<b>Building Size</b>	: 71 sqm
<b>Land Size</b>	: 150 sqm
<b>View</b>	: <a href="https://www.magain.com.au/property/10-48-partridge-street-glenelg-sa/7672945">https://www.magain.com.au/property/10-48-partridge-street-glenelg-sa/7672945</a>



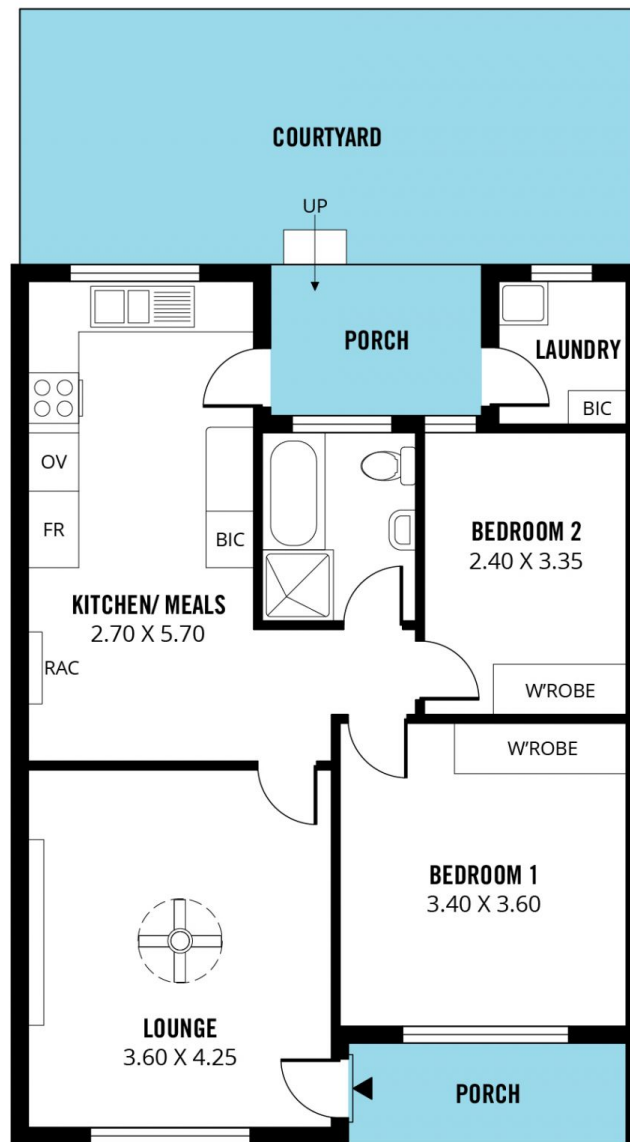
**Travis Denham**  
08 8398 1494



**Michelle Draper**  
08 8398 1494

[For full version visit the website](https://www.magain.com.au)

<https://www.magain.com.au>  
Magain Real Estate



Scale in metres. This drawing is for illustration purposes only. All measurements are approximate and details intended to be relied upon should be independently verified.

Produced by **The Fotobase Group**