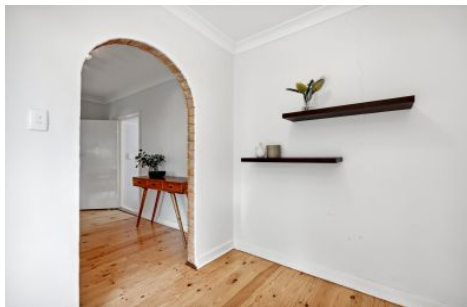


# MAGAIN



## 15 Salisbury Avenue Morphett Vale SA

4 1 3

Travis Denham and Michelle Draper welcome to the market, this generous family home located at 15 Salisbury Avenue, Morphett Vale.

Positioned on a generous 620 sqm corner block (approx.) and within close proximity to local amenities such as shops, schools and parks this property is sure to appeal to a wide range of purchasers. This character filled home benefits from a spacious and fully functional floorplan which is complete with a formal living area, four bedrooms, an undercover entertaining area along with a generous yard surrounding the property. This home is packed with features you'll be sure to love.

Entering into the home, you will instantly notice the warm

[For full version visit the website](https://www.magain.com.au)

**Type** : House  
**Price** : \$ 556,000  
**Building Size** : 138 sqm  
**Land Size** : 622 sqm  
**View** : <https://www.magain.com.au/property/15-salisbury-avenue-morphett-vale-sa/7672946>



**Travis Denham**  
08 8298 1494



**Michelle Draper**  
08 8298 1494

<https://www.magain.com.au>  
Magain Real Estate

Produced by **The Fotobase Group**