

MAGAIN



6 Hartland Avenue Christie Downs SA

3 1 1

Please contact Scott for all your property advice.

This delightful home built in 2004 is a true gem, surrounded by houses of similar vintage. From the moment you arrive, you'll be enchanted by the pretty Tudor-style front, and neatly maintained gardens.

You'll be impressed by the spacious open-plan living area, ideal for creating cherished memories with loved ones. The neat neutral kitchen is a chef's delight, equipped with modern conveniences, including a dishwasher, stainless steel appliances, and a filter tap. Prepare your family meals with ease in this functional and clean kitchen.

This home boasts three generously sized bedrooms. The

[For full version visit the website](https://www.magain.com.au/property/6-hartland-avenue-christie-downs-sa/7672954)

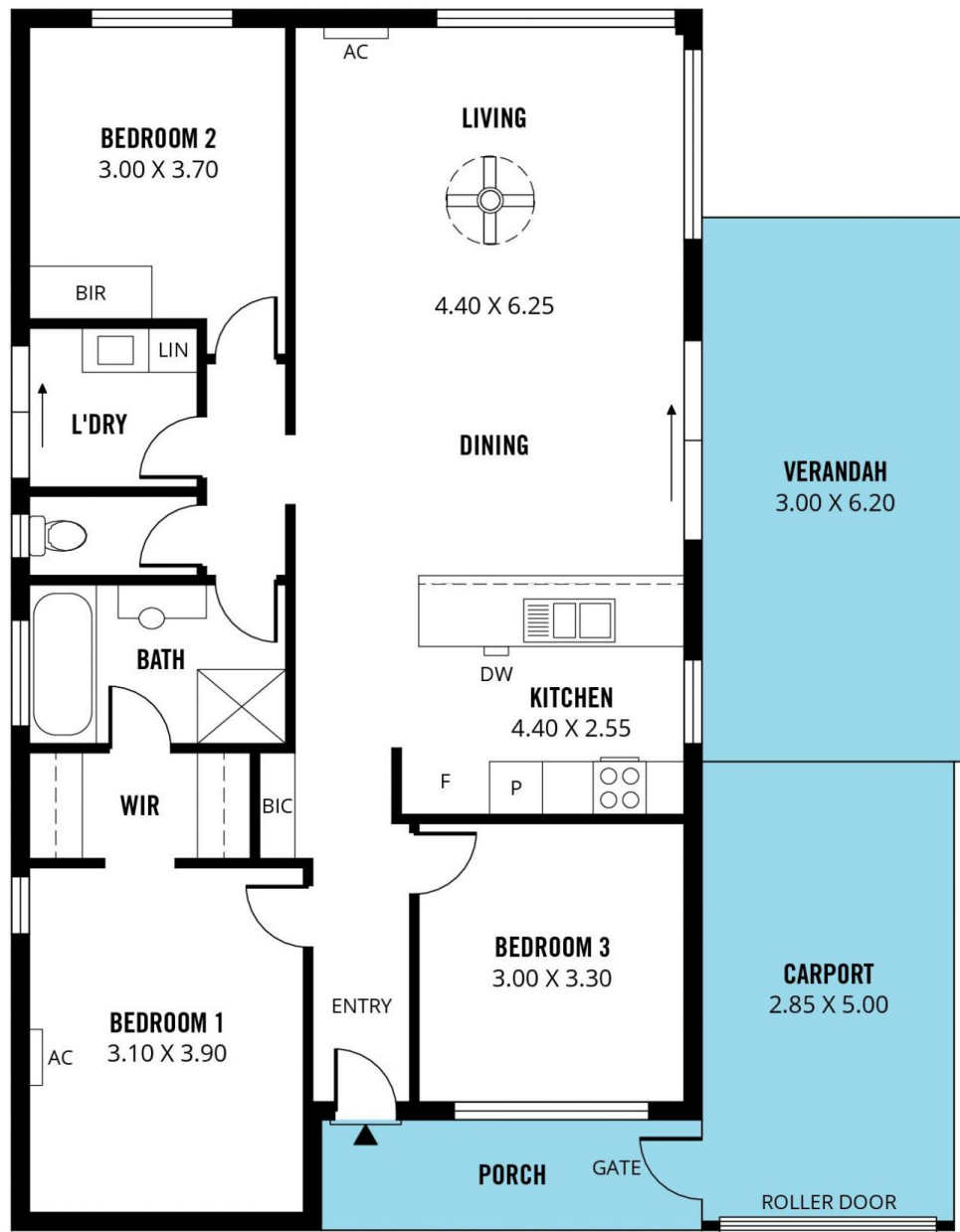
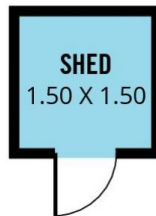
Type : House
Price : \$ 572,000
Land Size : 375 sqm
View : <https://www.magain.com.au/property/6-hartland-avenue-christie-downs-sa/7672954>



Scott McPharlin
08 8382 0029



Zach Sproule
0435 661 010



Scale in metres. This drawing is for illustration purposes only. All measurements are approximate and details intended to be relied upon should be independently verified. Produced by **The Fotobase Group**