

MAGAIN



3 Pembry Crescent MORPHETT VALE SA

3 1 1

Open cancelled due to being under contract.

Contact Travis Denham or Craig Thomson for viewing times.

This delightful home is ideally situated on a quiet cul-de-sac street, set amongst beautiful trees and located close to all the local amenities such as shops, quality schools, parks, public transport and much more. This unique home is boasting with potential to be transformed into somewhere truly special to live. Making it a must see for first home buyers or those seeking a fantastic investment opportunity.

Built in 1963 the home offers 3 size-able bedrooms, each

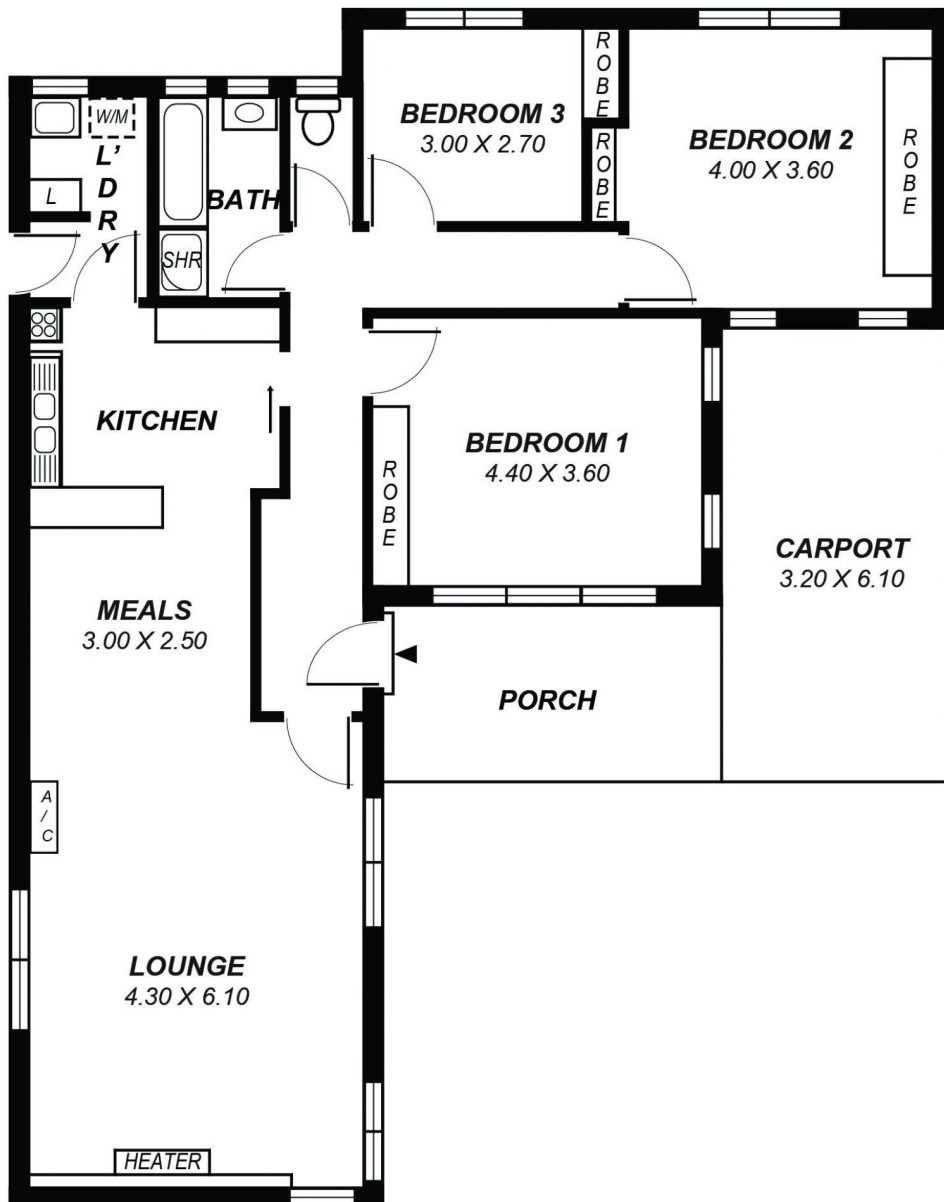
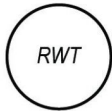
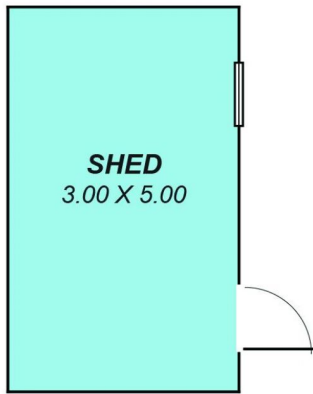
[For full version visit the website](https://www.magain.com.au/property/3-pembry-crescent-morphett-vale-sa/7685030)

Type : House
Building Size : 15 sqm
Land Size : 800 sqm
View : <https://www.magain.com.au/property/3-pembry-crescent-morphett-vale-sa/7685030>



Craig Thomson
0401 617 453

<https://www.magain.com.au>
Magain Real Estate



*This drawing is for illustration purposes only .
All measurements are approximate and details intended
to be relied upon should be independently verified.*