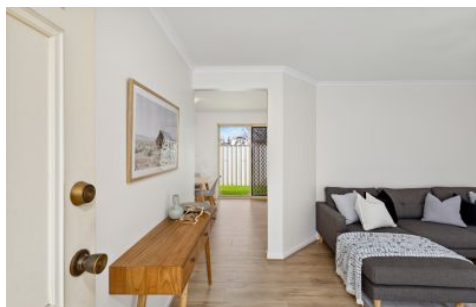


# MAGAIN



2/10 Osborne Street Oaklands Park SA

2 1 1

Please contact Scott for all your property advice.

A perfect oasis in the leafy suburb of Oaklands Park! Welcome to this spacious 2-bedroom unit, a true gem built in 1998. Nestled among high-quality homes in a picturesque street, this property offers the ultimate blend of comfort and convenience.

As you step inside, you'll be greeted by an abundance of light and airy ambiance. The interior boasts a recent makeover with light neutral colours, freshly painted walls, and brand new flooring.

The heart of the home, the kitchen, is equipped with a filtered water tap and offers plenty of space to bring your

[For full version visit the website](https://www.magain.com.au/property/210-osborne-street-oaklands-park-sa/7702867)

<b>Type</b>	: Unit
<b>Price</b>	: \$ 530,000
<b>Building Size</b>	: 98 sqm
<b>View</b>	: <a href="https://www.magain.com.au/property/210-osborne-street-oaklands-park-sa/7702867">https://www.magain.com.au/property/210-osborne-street-oaklands-park-sa/7702867</a>

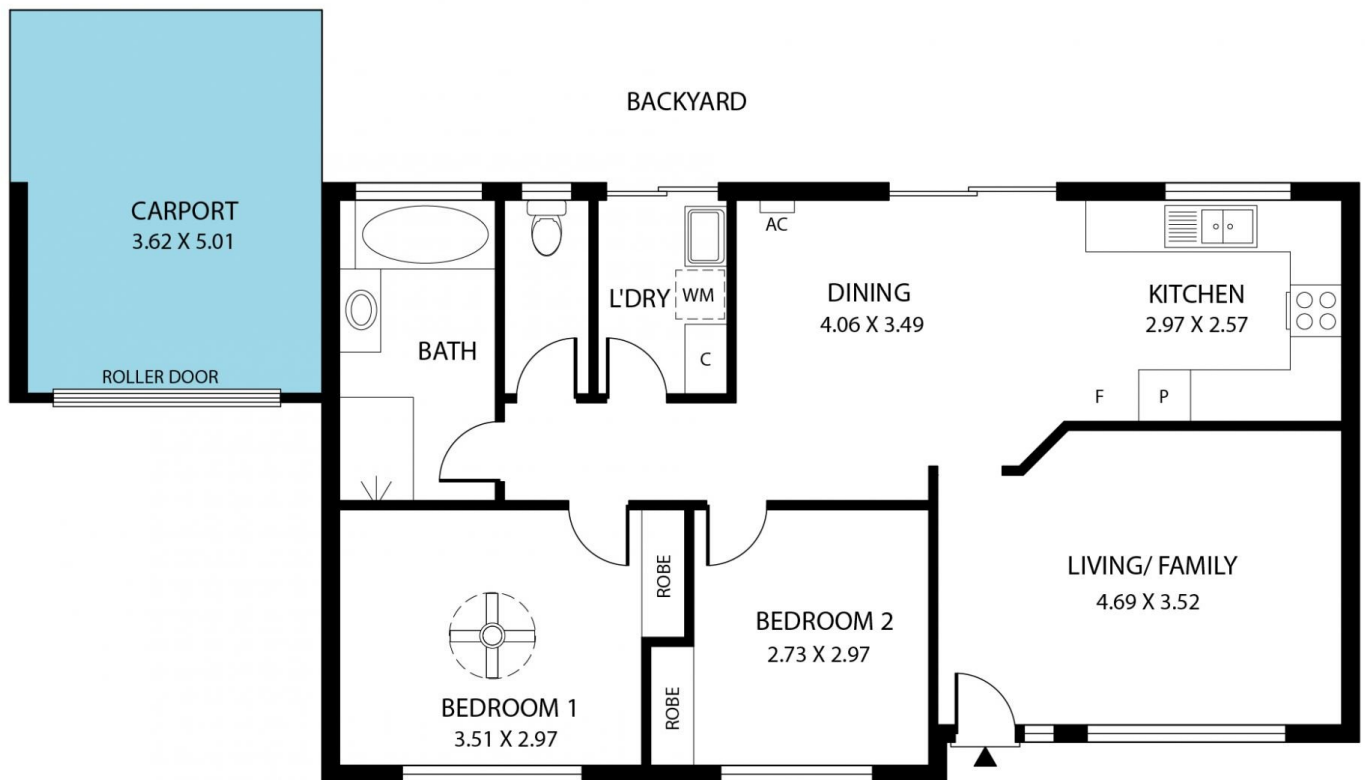


**Scott McPharlin**  
08 8382 0029



**Zach Sproule**  
0435 661 010

<https://www.magain.com.au>  
Magain Real Estate



Scale in metres. This drawing is for illustration purposes only. All measurements are approximate and details intended to be relied upon should be independently verified.

Produced by **The Fotobase Group**