

# MAGAIN



## 2/4 Wattle Avenue Hove SA

2 1 1

Michelle Draper and Travis Denham proudly present to the market 2/4 Wattle Avenue, Hove.

Situated in the highly sought after suburb of Hove, just minutes away from the Esplanade and nestled amongst other quality home's in this unit complex sits this beautifully presented, two-bedroom home. Featuring a functional floorplan inclusive of a separate living area as well as a low-maintenance courtyard, there is so much to love! This unit benefits from such a prominent location which is ideal for the first home buyers, downsizers and even the savvy investors alike.

Entering the home, you are instantly greeted by the gorgeous living area, complete with new carpeting and

[For full version visit the website](https://www.magain.com.au/property/24-wattle-avenue-hove-sa/7707380)

|                      |   |
|----------------------|---|
| <b>Type</b>          | : Unit  |
| <b>Price</b>         | : \$ 538,000  |
| <b>Building Size</b> | : 90 sqm  |
| <b>Land Size</b>     | : 120 sqm   |
| <b>View</b>          | : <a href="https://www.magain.com.au/property/24-wattle-avenue-hove-sa/7707380">https://www.magain.com.au/property/24-wattle-avenue-hove-sa/7707380</a> |

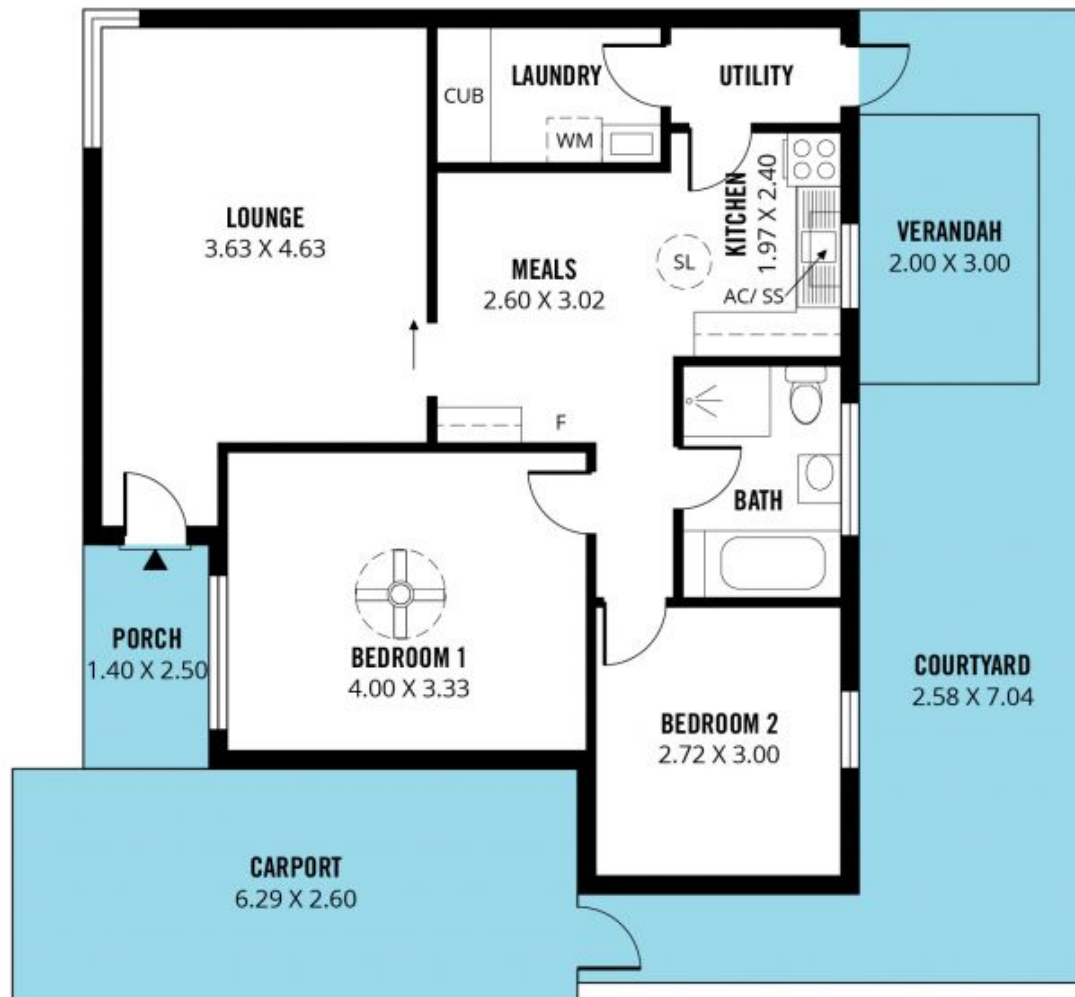


**Michelle Draper**  
08 8398 1494



**Travis Denham**  
08 8398 1494

<https://www.magain.com.au>  
Magain Real Estate



Scale in metres. This drawing is for illustration purposes only. All measurements are approximate and details intended to be relied upon should be independently verified. Produced by **The Fotobase Group**