

MAGAIN



27 Salisbury Avenue Morphett Vale SA

3 1 1

Please contact Craig for all your property advice.

Offering a unique opportunity for the astute investor or owner occupier, this home enjoys a peaceful position moments from Morphett Vale's conveniences. This home epitomises casual living and entertaining all round with its versatile layout. Situated in a quiet street, this family home has 3 light filled bedrooms and a spacious open plan living and dining area. A covered entertaining area is a great addition to the fully secured backyard with space for the kids to play and pets to roam.

The master suite is perfectly positioned to provide privacy and offers a spacious and sumptuous parent's retreat.

? Walk everywhere! Shops, bars, cafés and transport all at your fingertips

[For full version visit the website](https://www.magain.com.au/property/27-salisbury-avenue-morphett-vale-sa/7723857)

Type	: House
Price	: \$ 500,000
Building Size	: 120 sqm
Land Size	: 620 sqm
View	: https://www.magain.com.au/property/27-salisbury-avenue-morphett-vale-sa/7723857

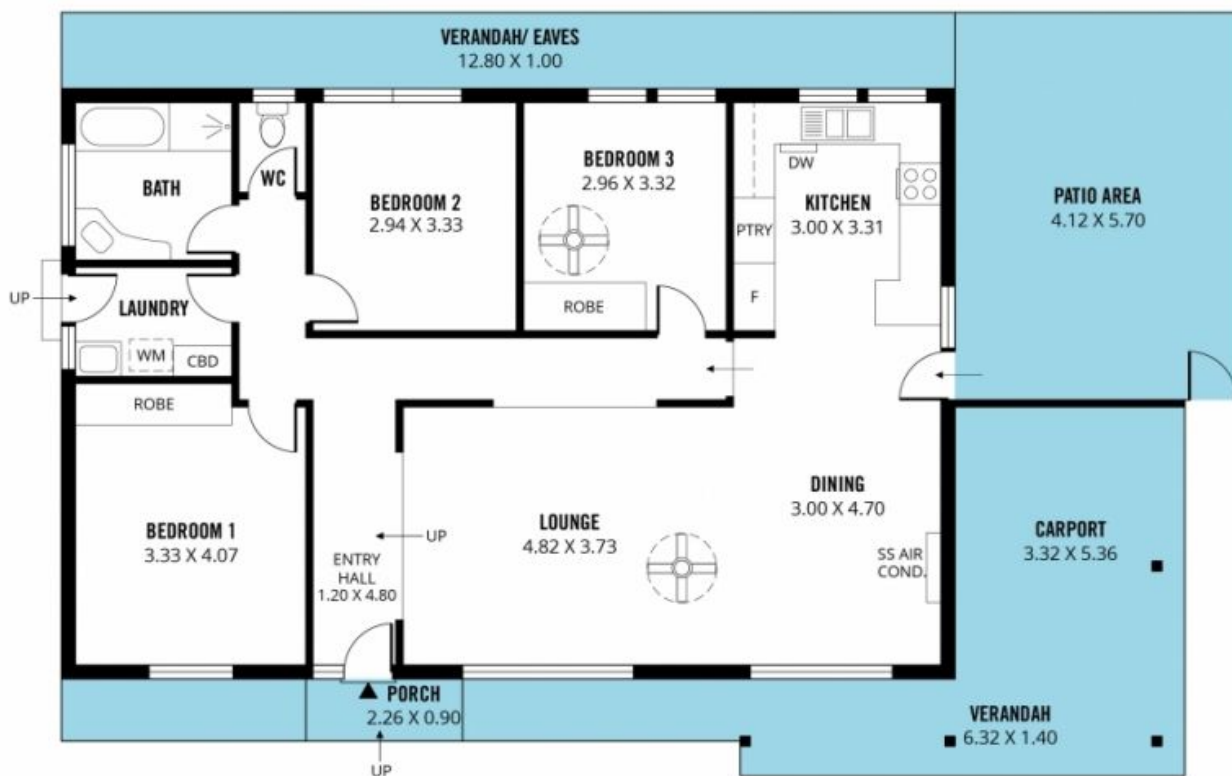
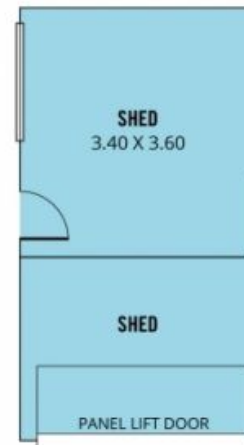
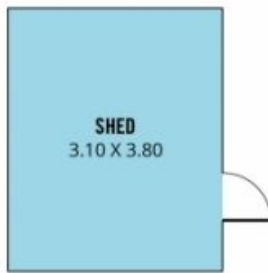


Craig Thomson
08 8266 2292



Andrew Robey
08 8266 2292

<https://www.magain.com.au>
Magain Real Estate



m

