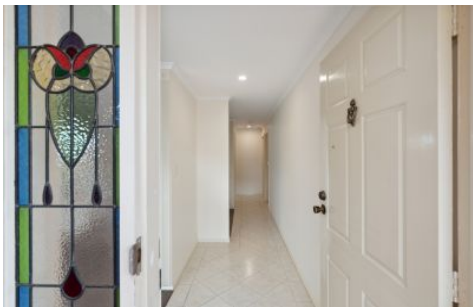


# MAGAIN



## 2 Lomandra Place Flagstaff Hill SA

3 2 2

Please contact Karen Heuer or Andrew Boswell for all your property advice.

This charming house offers a perfect blend of comfort, style and practicality, making it an ideal home for those seeking a tranquil yet convenient lifestyle. Nestled in a prime location, it boasts a picturesque setting with a lush green lawn area right across the street and a beautifully landscaped front garden, creating a delightful first impression. Painted throughout, the home is ready to move in and enjoy.

Stepping inside, you'll be greeted by an abundance of natural light that streams through the windows, enhancing the spacious lounge and formal dining areas located to the

[For full version visit the website](https://www.magain.com.au/property/2-lomandra-place-flagstaff-hill-sa/7748537)

**Type** : House  
**Price** : \$ 765,000  
**Building Size** : 174 sqm  
**Land Size** : 421 sqm  
**View** : <https://www.magain.com.au/property/2-lomandra-place-flagstaff-hill-sa/7748537>

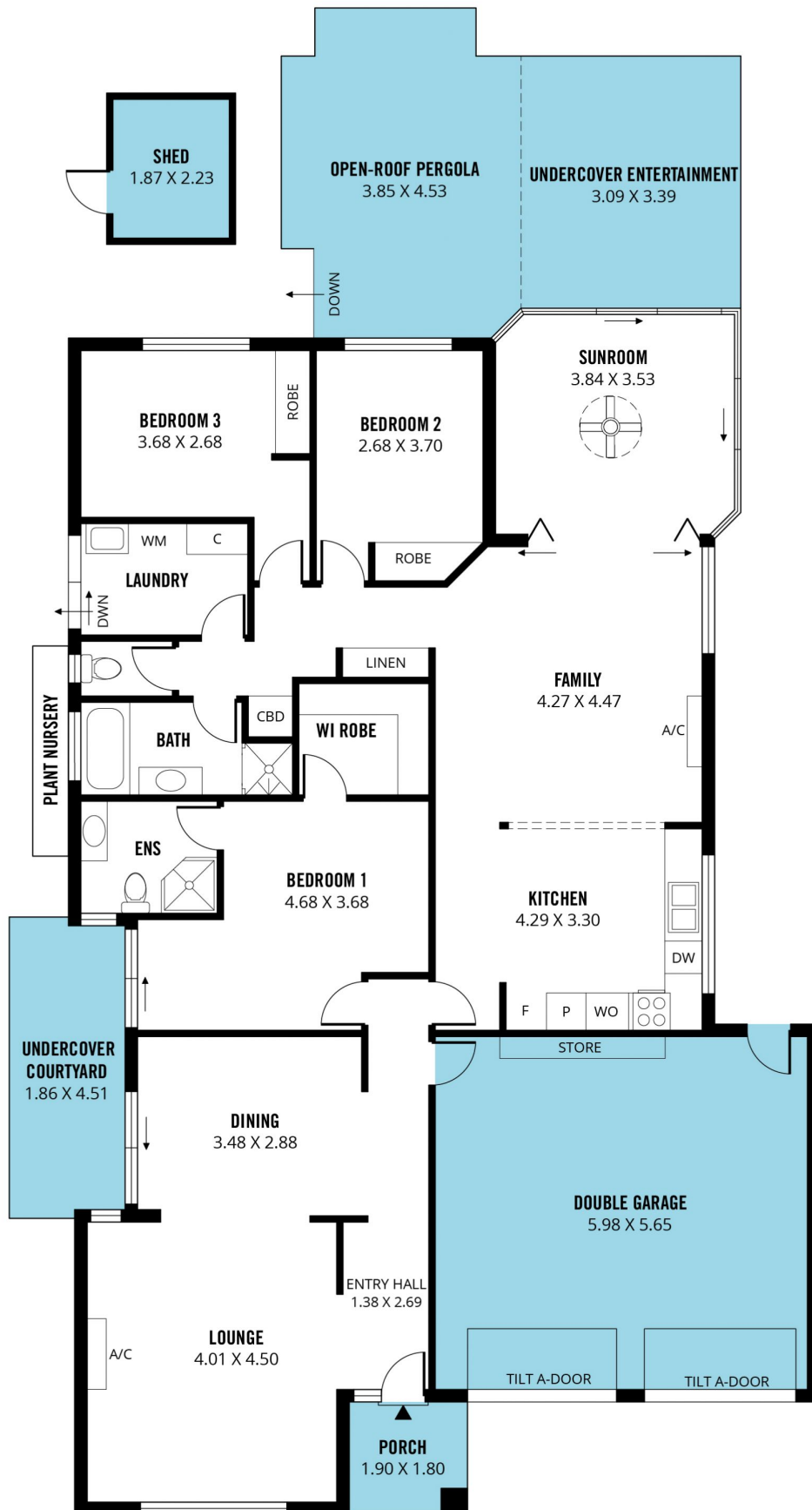


**Karen Heuer**  
0451 277 706



**Andrew Boswell**  
0410 444 782

<https://www.magain.com.au>  
Magain Real Estate



Scale in metres. This drawing is for illustration purposes only. All measurements are approximate and details intended to be relied upon should be independently verified.

Produced by **The Fotobase Group**