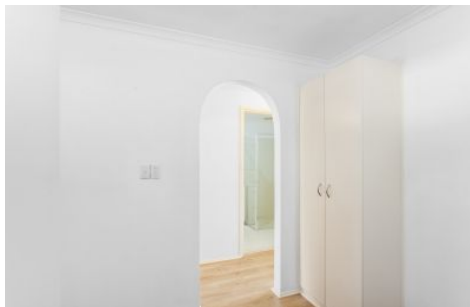


# MAGAIN



**3/27 Epstein Drive Morphett Vale SA**

**2**  **1**  **1** 

Please contact Craig Thomson or Andrew Robey from Magain Real Estate for all your property advice.

Discover the perfect blend of comfort and convenience in this inviting 2-bedroom, 1-bath unit at 3/27 Epstein Drive, Morphett Vale, South Australia. Tucked away securely at the cul-de-sac's end, this residence promises a tranquil living experience.

Step into a well-designed space that effortlessly combines practicality and style. The thoughtful layout ensures a seamless flow between rooms, creating an open and welcoming atmosphere. The bedrooms, each with its unique character, offer cozy retreats for rest and relaxation.

[For full version visit the website](https://www.magain.com.au/property/327-epstein-drive-morphett-vale-sa/7813548)

**Type** : Unit  
**Price** : \$ 425,000  
**Land Size** : 147 sqm  
**View** : <https://www.magain.com.au/property/327-epstein-drive-morphett-vale-sa/7813548>



**Craig Thomson**  
**08 8366 2292**



**Andrew Robey**  
**08 8366 2292**

<https://www.magain.com.au>  
Magain Real Estate

