

MAGAIN



113 Commercial Road Port Noarlunga South SA

2 1 2

Please contact Andrew Boswell or Karen Heuer from Magain Real Estate for all of your property enquiries.

Located in this tightly held suburb and only minutes to one of the Souths best beaches at Beachport, Port Noarlunga Township and Seaford Shopping Centre, this little winner is a great starting point on the Bricks and Mortar ladder.

Low maintenance and easy care corner allotment with side street gated access car parking off Albany Avenue.

Just some of this features of this unique and 'a little bit different' property;

-Two bedrooms; large master with wall to wall robe and

[For full version visit the website](https://www.magain.com.au)

Type : House
Price : \$ 510,000
Building Size : 98 sqm
Land Size : 414 sqm
View : <https://www.magain.com.au/property/113-commercial-road-port-noarlunga-south-sa/7824835>

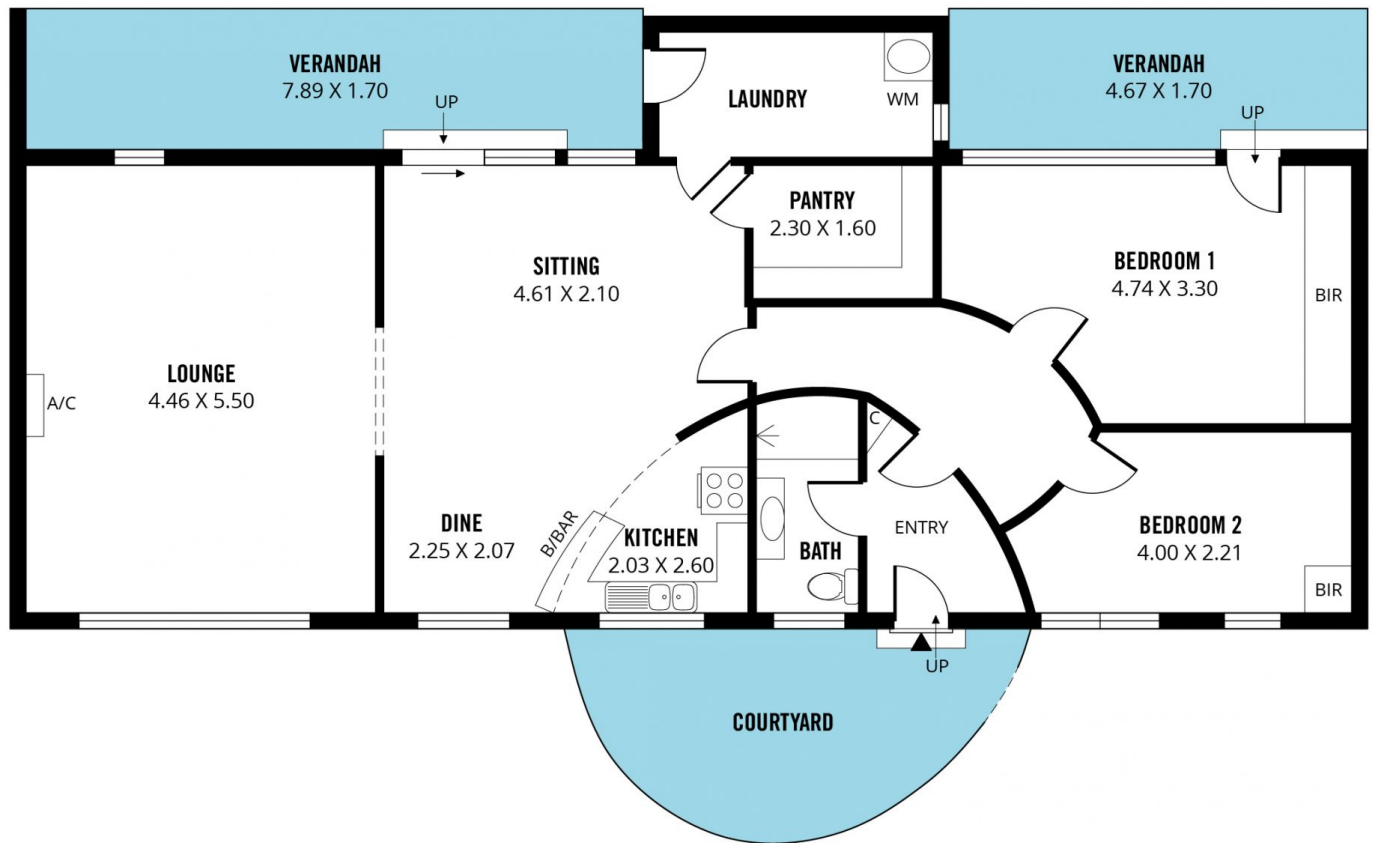


Andrew Boswell
08 8281 6000



Karen Heuer
08 8281 6000

<https://www.magain.com.au>
Magain Real Estate



Scale in metres. This drawing is for illustration purposes only. All measurements are approximate and details intended to be relied upon should be independently verified.

Produced by **The Fotobase Group**