

MAGAIN



4/300 Main South Road Morphett Vale SA

3 **2** **1**

Please contact Craig Thomson or Andrew Robey for all your property advice.

Situated in a convenient location within an easy walking distance to amenities, this character filled home oozes charm and appeal. With its expansive multi-level layout, high ceilings and copious amount of natural light, this private abode sets a high standard for family living and comfort. The designer kitchen will bring out the inner chef in you, with a gas cook-top, dishwasher, double sink and plenty of storage space. Light and bright open plan living/dining/deluxe kitchen equipped with stylish stainless steel appliances and many other amazing features. Undercover outdoor entertaining area, just ideal for relaxing on long summer evenings. Each bedroom offers lots of

Type : House
Price : \$ 555,555
Building Size : 125 sqm
Land Size : 164 sqm
View : <https://www.magain.com.au/property/4300-main-south-road-morphett-vale-sa/7888092>

[For full version visit the website](https://www.magain.com.au)

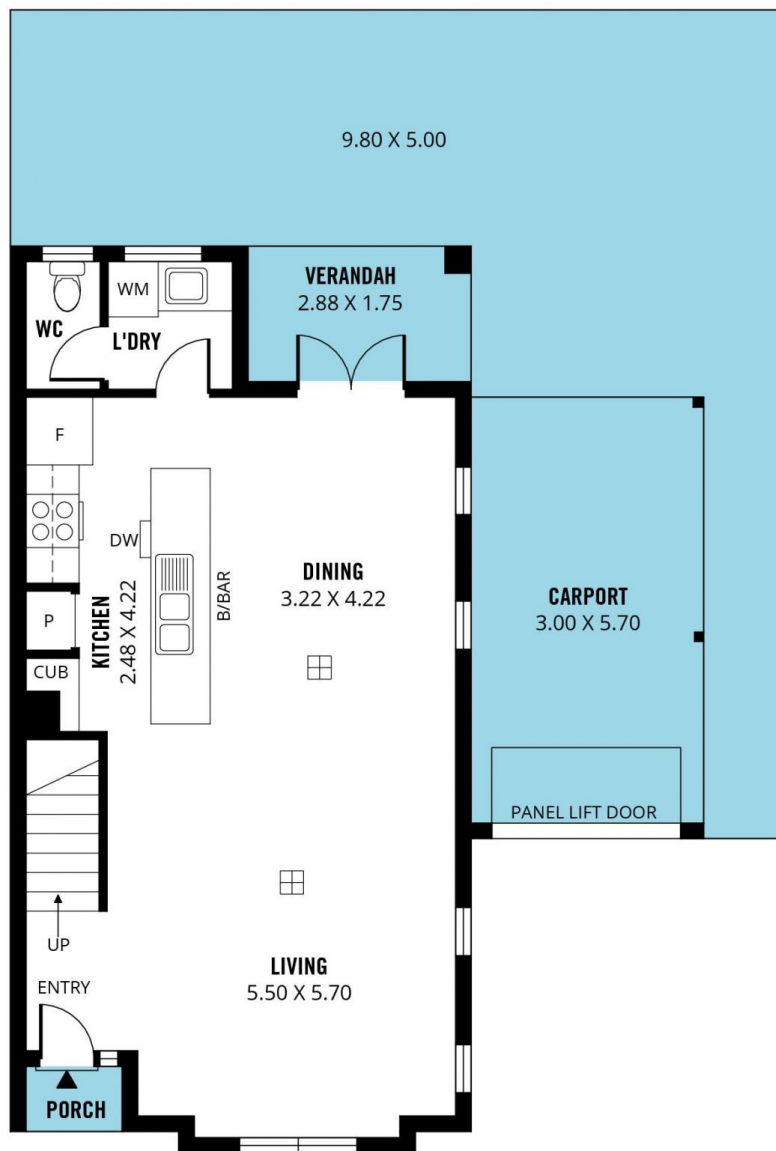


Craig Thomson
08 8266 2292

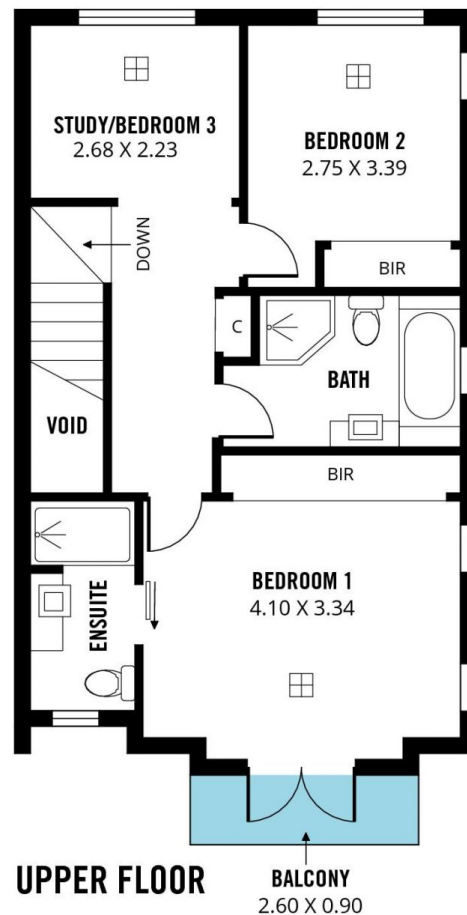


Andrew Robey
08 8266 2292

<https://www.magain.com.au>
Magain Real Estate



GROUND FLOOR



UPPER FLOOR



Scale in metres. This drawing is for illustration purposes only. All measurements are approximate and details intended to be relied upon should be independently verified.

Produced by **The Fotobase Group**