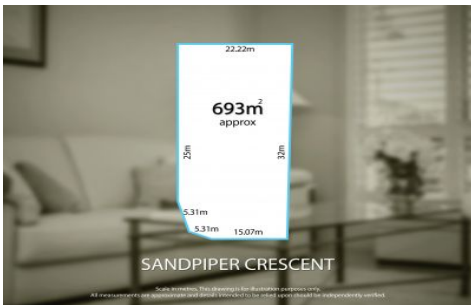


# MAGAIN



## 20 Sandpiper Crescent Aberfoyle Park SA

3 1 4

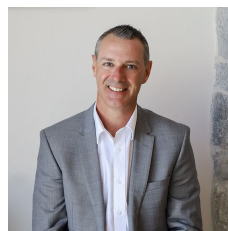
Sold at Auction by Brett Taylor of Magain Real Estate.

Welcome to 20 Sandpiper Crescent, Aberfoyle Park. This good sized family home is perfectly suited to first home buyers who appreciate a spacious back yard. Its also perfect for those who are looking to downsize with its ground level appeal and minimal trip hazards. The astute investor will also appreciate a predicted rental income between \$580 - \$630 per week and the potential for redevelopment with its corner block attributes STCC, it would certainly capture the eyes of of developers.

If first impressions count, then you'll love the warm and welcoming design of this well built, 4 bedroom family home. Set on a big 693sqm Torrens Titled, near flat corner block.

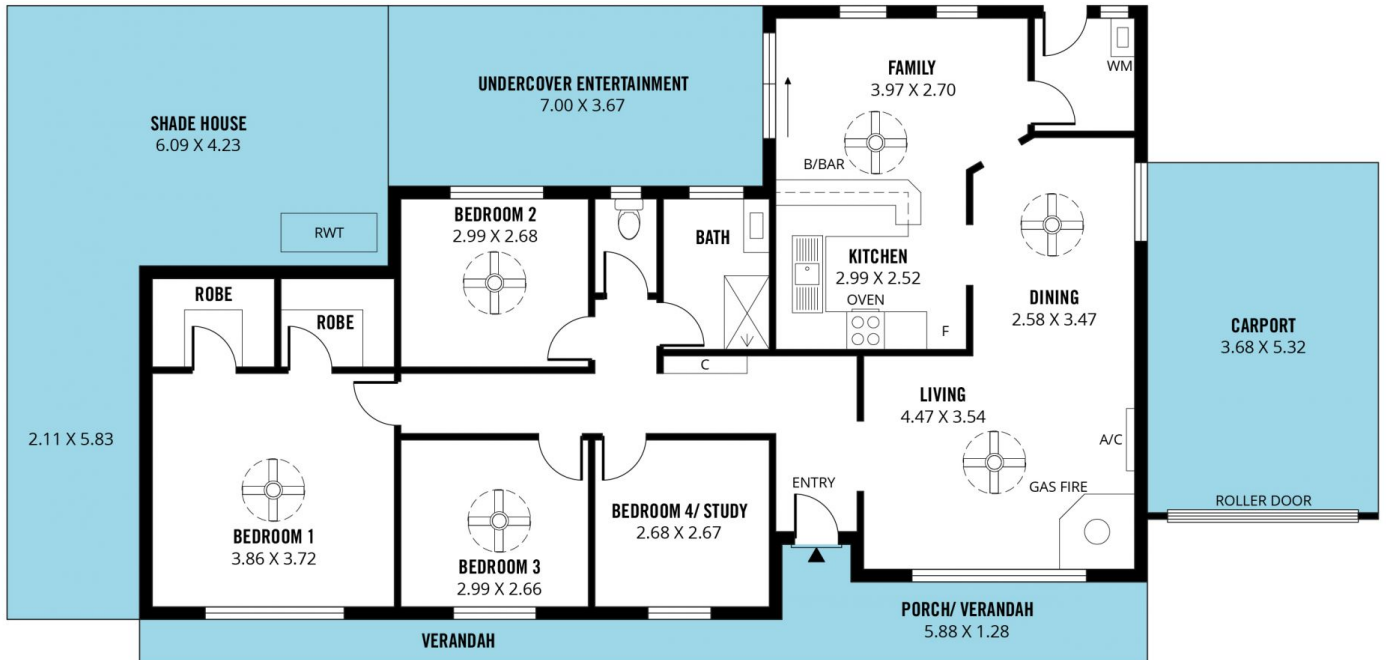
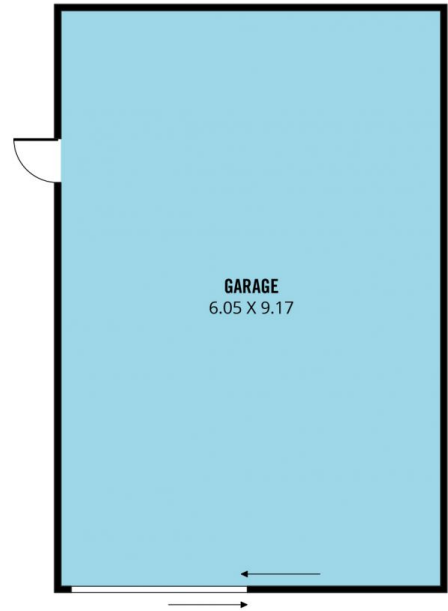
[For full version visit the website](https://www.magain.com.au/property/20-sandpiper-crescent-aberfoyle-park-sa/7939526)

<b>Type</b>	: House
<b>Price</b>	: \$ 690,000
<b>Building Size</b>	: 121 sqm
<b>Land Size</b>	: 693 sqm
<b>View</b>	: <a href="https://www.magain.com.au/property/20-sandpiper-crescent-aberfoyle-park-sa/7939526">https://www.magain.com.au/property/20-sandpiper-crescent-aberfoyle-park-sa/7939526</a>



**Brett Taylor**  
0420591680

<https://www.magain.com.au>  
Magain Real Estate



Scale in metres. This drawing is for illustration purposes only. All measurements are approximate and details intended to be relied upon should be independently verified.

Produced by The Fotobase Group