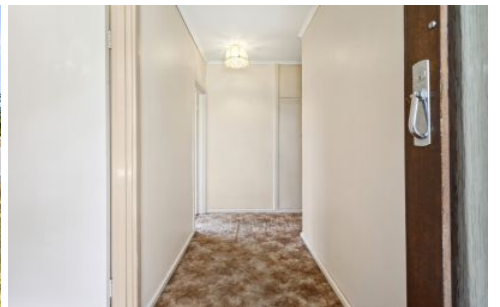


# MAGAIN



## 14 Warwick Grove Morphett Vale SA

3 1 2

Please contact Craig Thomson and Andrew Robey from Magain Real Estate for all your property advice.

Welcome to an exciting opportunity for renovation enthusiasts and investors alike. This 3-bedroom, 1-bathroom property presents itself as a blank canvas, brimming with untapped potential and waiting to be transformed into a stunning living space. Nestled in Morphett Vale, this property offers the promise of customization and modernization, making it an ideal investment for those with a vision for revitalization.

One of the standout features of this property is its substantial land size, boasting an impressive 705m<sup>2</sup>. The large block presents a multitude of opportunities for

**Type** : House  
**Price** : \$ 525,000  
**Land Size** : 705 sqm  
**View** : <https://www.magain.com.au/property/14-warwick-grove-morphett-vale-sa/7949251>



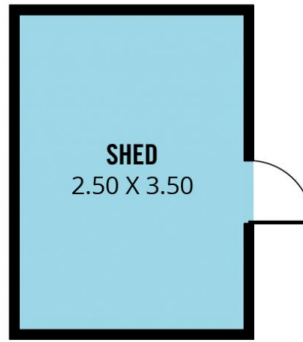
**Craig Thomson**  
08 8366 2292



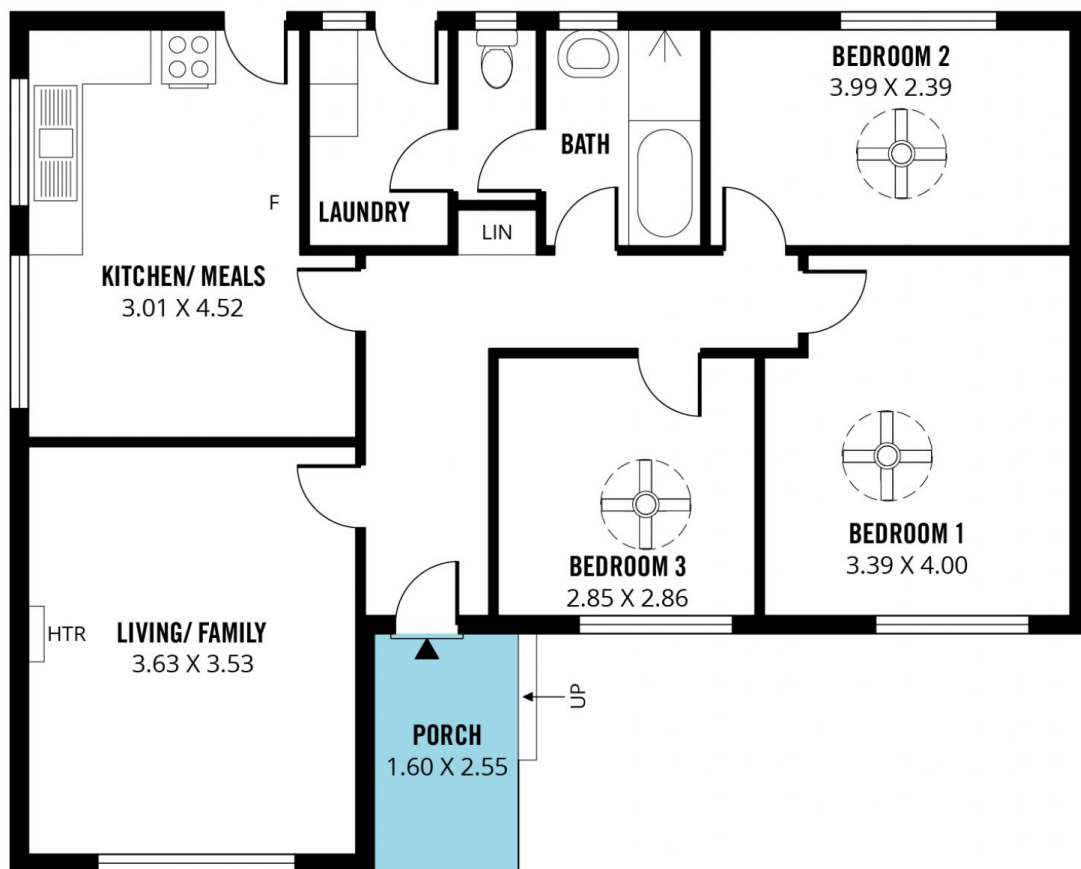
**Andrew Robey**  
08 8366 2292

[For full version visit the website](https://www.magain.com.au)

<https://www.magain.com.au>  
Magain Real Estate



(NOT IN POSITION)



Scale in metres. This drawing is for illustration purposes only. All measurements are approximate and details intended to be relied upon should be independently verified. Produced by **The Fotobase Group**