

# MAGAIN



## 10 Almond Court Coromandel Valley SA

3 1 2

Please contact Danielle Comer or Rachael Farror from Magain Real Estate for all your property advice.

Welcome to your new family home nestled in the leafy suburb of Coromandel Valley. Situated on a generous corner block, this residence boasts both charm and functionality, offering a lifestyle of comfort and convenience.

Step inside and be greeted by the light-filled main lounge area, featuring a built-in bar and a striking feature stone wall, perfect for entertaining guests or relaxing with loved ones. The seamless flow leads you to the main living area, complete with a split system for climate control and sliding doors that open directly to the outside, seamlessly blending

<b>Type</b>	: House
<b>Price</b>	: \$ 790,000
<b>Building Size</b>	: 173 sqm
<b>Land Size</b>	: 676 sqm
<b>View</b>	: <a href="https://www.magain.com.au/property/10-almond-court-coromandel-valley-sa/7999410">https://www.magain.com.au/property/10-almond-court-coromandel-valley-sa/7999410</a>

[For full version visit the website](https://www.magain.com.au)

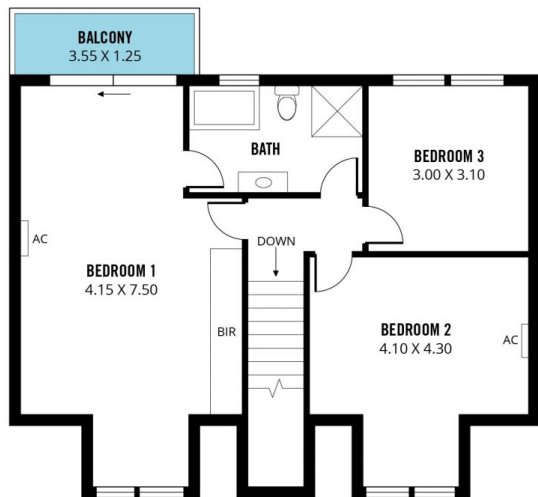


**Danielle Comer**  
08 8222 6111

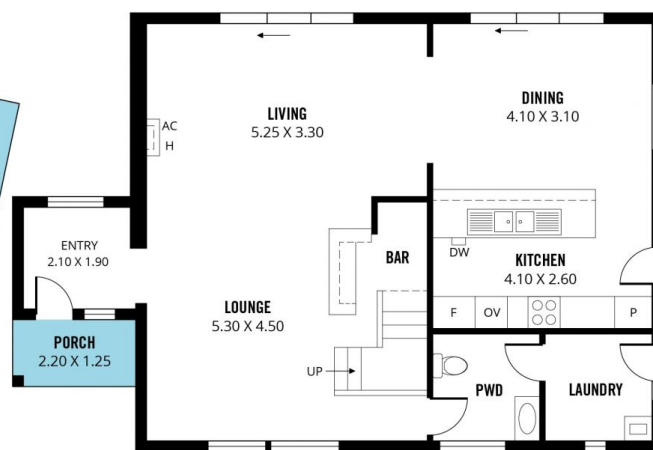
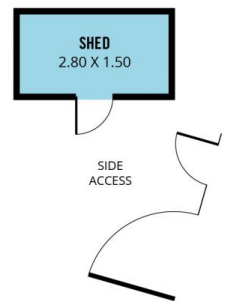
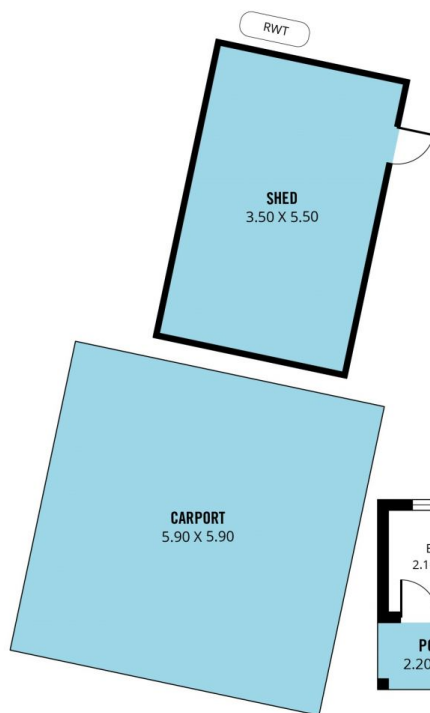


**Rachael Farror**  
08 8222 6111

<https://www.magain.com.au>  
Magain Real Estate



UPPER FLOOR



GROUND FLOOR



Scale in metres. This drawing is for illustration purposes only. All measurements are approximate and details intended to be relied upon should be independently verified.

Produced by The Fotobase Group