

MAGAIN



13 Shoalstone Court Moana SA

4 2 4

Please contact David Hams from Magain Real Estate for all your property advise.

Tucked away at the end of a quiet cul-de-sac next to a gum studded reserve this 4 bedroom home is set on over 900m² (approx) with an awesome 9m x 7.8 shed/workshop and offers huge potential for a range of buyers.

With a spacious and versatile floorplan coupled with great shedding and additional off street parking/storage you will love the flexibility that is clear to see if you take the time to inspect this property.

The separate entry foyer provides access to the formal lounge/dining area with a ceiling fan, kitchen access and

Type : House
Building Size : 176 sqm
Land Size : 943 sqm
View : <https://www.magain.com.au/property/13-shoalstone-court-moana-sa/8050565>



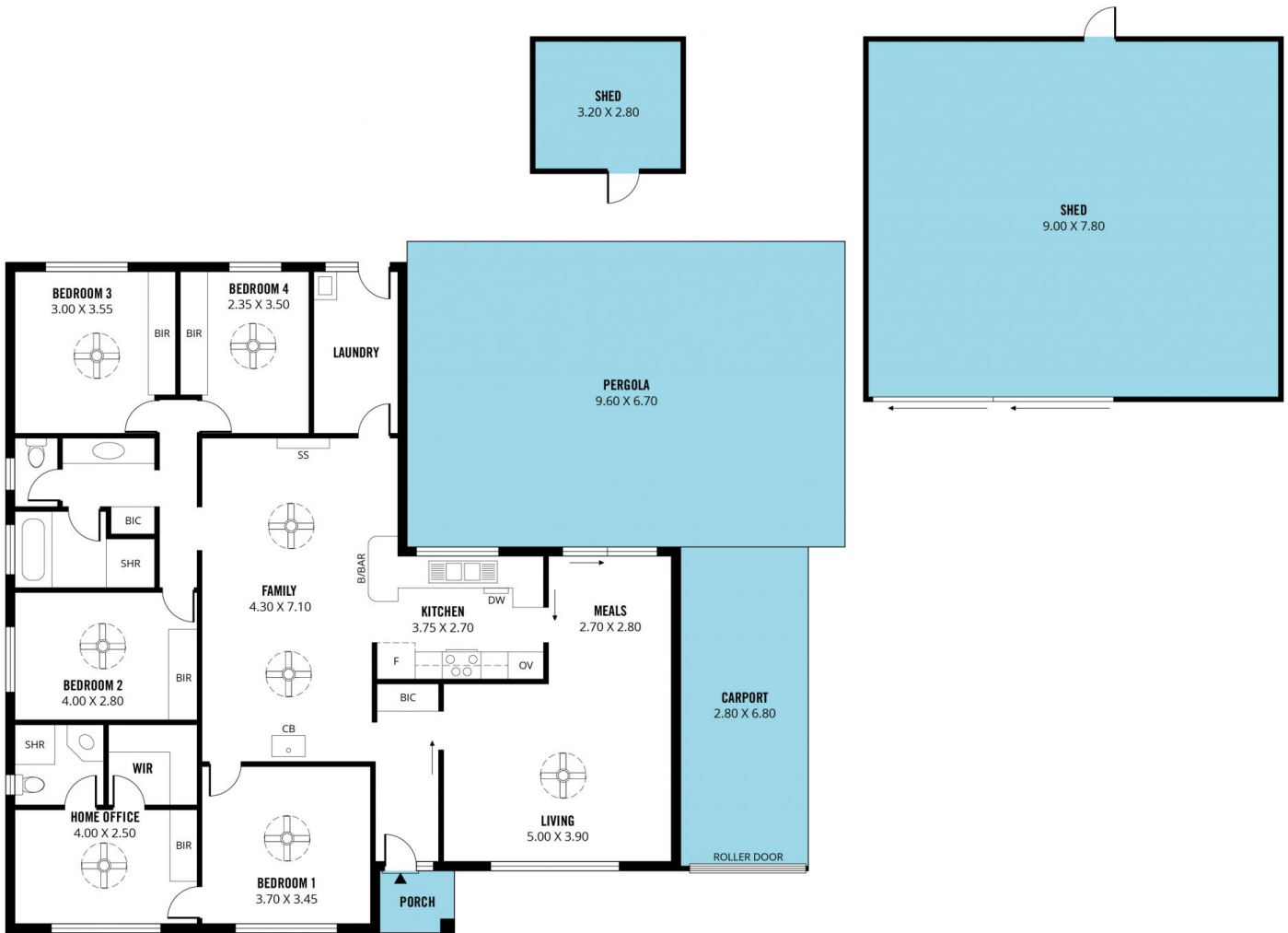
David Hams
08 8366 2230



Mitch Portlock
08 8366 2230

[For full version visit the website](https://www.magain.com.au)

<https://www.magain.com.au>
Magain Real Estate



Scale in metres. This drawing is for illustration purposes only. All measurements are approximate and details intended to be relied upon should be independently verified.

Produced by **The Fotobase Group**