

# MAGAIN



## 4 Kombi Court Port Willunga SA

3 1 1

Please contact David Hams from Magain Real Estate for all your property advise.

Tucked away at the end of a private and quiet Cul-De-Sac and set on a generously sized 800m2 (approx) of land, this tastefully updated and impressively presented 3 bedroom home will appeal to a wide range of buyers looking to move into this highly sought after beachside suburb.

Within close proximity to some of the States best and most picturesque beaches, local cafes, the revamped old Aldinga township, a number of schooling options and not far from the famous McLaren Vale Wine Region you're going to love what this properties location offers.

[For full version visit the website](https://www.magain.com.au/property/4-kombi-court-port-willunga-sa/8054915)

**Type** : House  
**Building Size** : 122 sqm  
**Land Size** : 800 sqm  
**View** : <https://www.magain.com.au/property/4-kombi-court-port-willunga-sa/8054915>

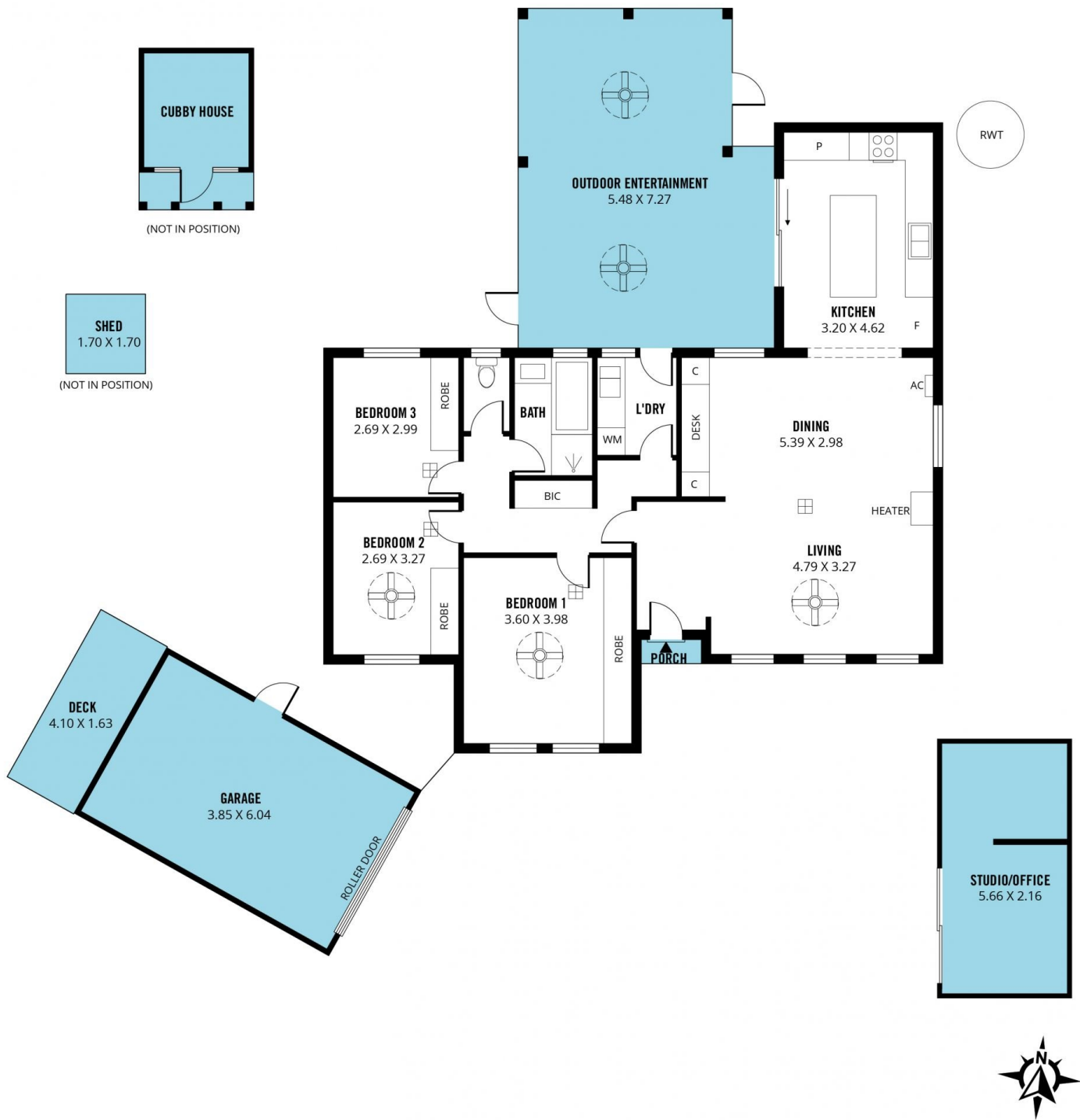


**David Hams**  
08 8366 2230



**Mitch Portlock**  
08 8366 2230

<https://www.magain.com.au>  
Magain Real Estate



Scale in metres. This drawing is for illustration purposes only. All measurements are approximate and details intended to be relied upon should be independently verified.

Produced by The Fotobase Group