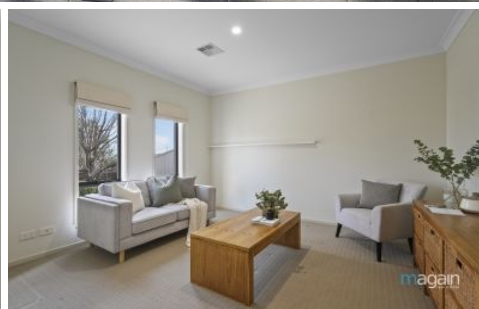


MAGAIN



15 Neath Avenue Dover Gardens SA

4 2 2

This fabulous home , custom built in 2009 is sure to tick all your boxes. Designed with practicality and space in mind, you'll be impressed with the size of the home and the spacious green backyard, offering the great Australian dream.

Located in a prime area, you can step outside your door to catch public transport or head up the street to an extended-hour Foodland, a number of cafes and restaurants, a chemist, bakery, or bottle shop. You can leave the car at home ! Nature lovers will enjoy the nearby parks or a healthy stroll to the beach. Or if shopping is your thing, Marion Westfield Shopping centre is only moments away.

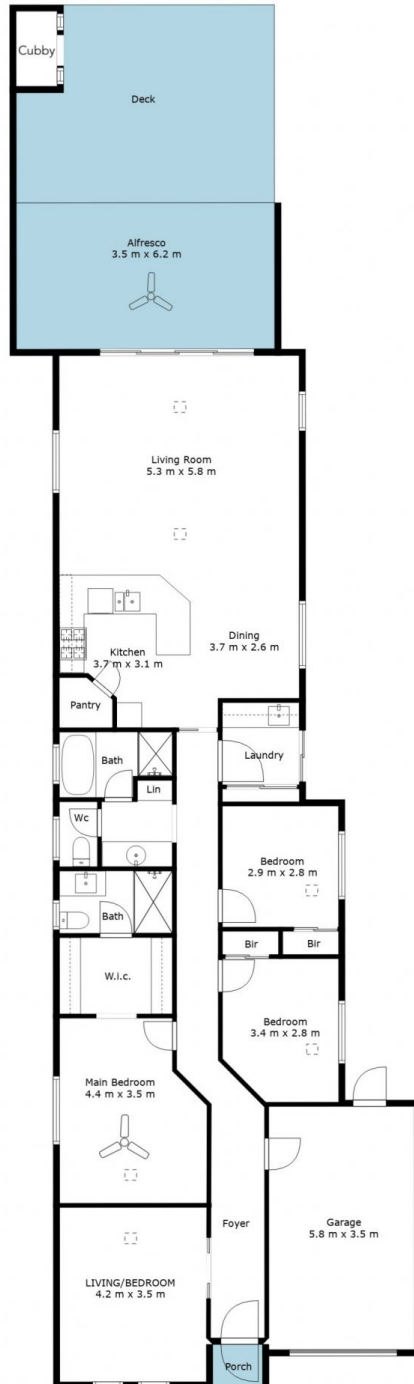
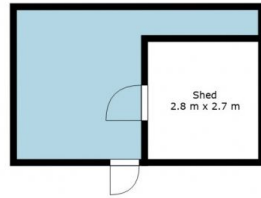
Type : House
Price : \$ 996,500
Building Size : 200 sqm
Land Size : 449 sqm
View : <https://www.magain.com.au/property/15-neath-avenue-dover-gardens-sa/8083058>



Sandy Robinson
08 8298 1494

[For full version visit the website](https://www.magain.com.au)

<https://www.magain.com.au>
Magain Real Estate



| | | |
|---------------------|------------|------------|
| Living | 144 | SQM |
| Garage | 20 | SQM |
| Alfresco | 22 | SQM |
| Shed | 7 | SQM |
| Total Approx | 193 | SQM |



Scale in metres. This drawing is for illustration purposes only. All measurements are approximate and details intended to be relied upon should be independently verified.