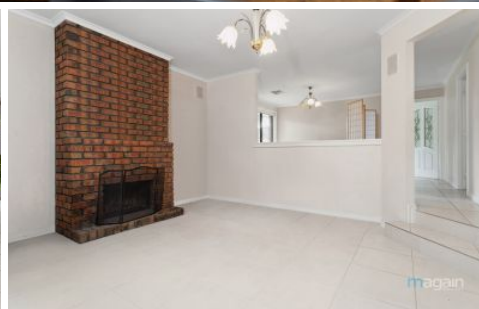


# MAGAIN



## 17 Chifley Crescent Trott Park SA

4 2 1

Please contact Danielle Comer or Rachael Farror from Magain Real Estate for all your property advice.

Currently tenanted for \$670 per week until 18th April 2025.

This beautifully presented four-bedroom family home, nestled in the desirable community of Trott Park, offers the perfect blend of comfort and functionality, making it an ideal sanctuary for modern family living. Trott Park is renowned for its peaceful atmosphere, family-friendly environment, and proximity to excellent schools, parks, and shopping options, making it a highly sought-after location for those seeking a balanced lifestyle.

Upon entry, a warm and inviting sunken lounge room with a

[For full version visit the website](https://www.magain.com.au/property/17-chifley-crescent-trott-park-sa/8121450)

**Type** : House  
**Price** : \$ 882,000  
**Building Size** : 205 sqm  
**Land Size** : 953 sqm  
**View** : <https://www.magain.com.au/property/17-chifley-crescent-trott-park-sa/8121450>

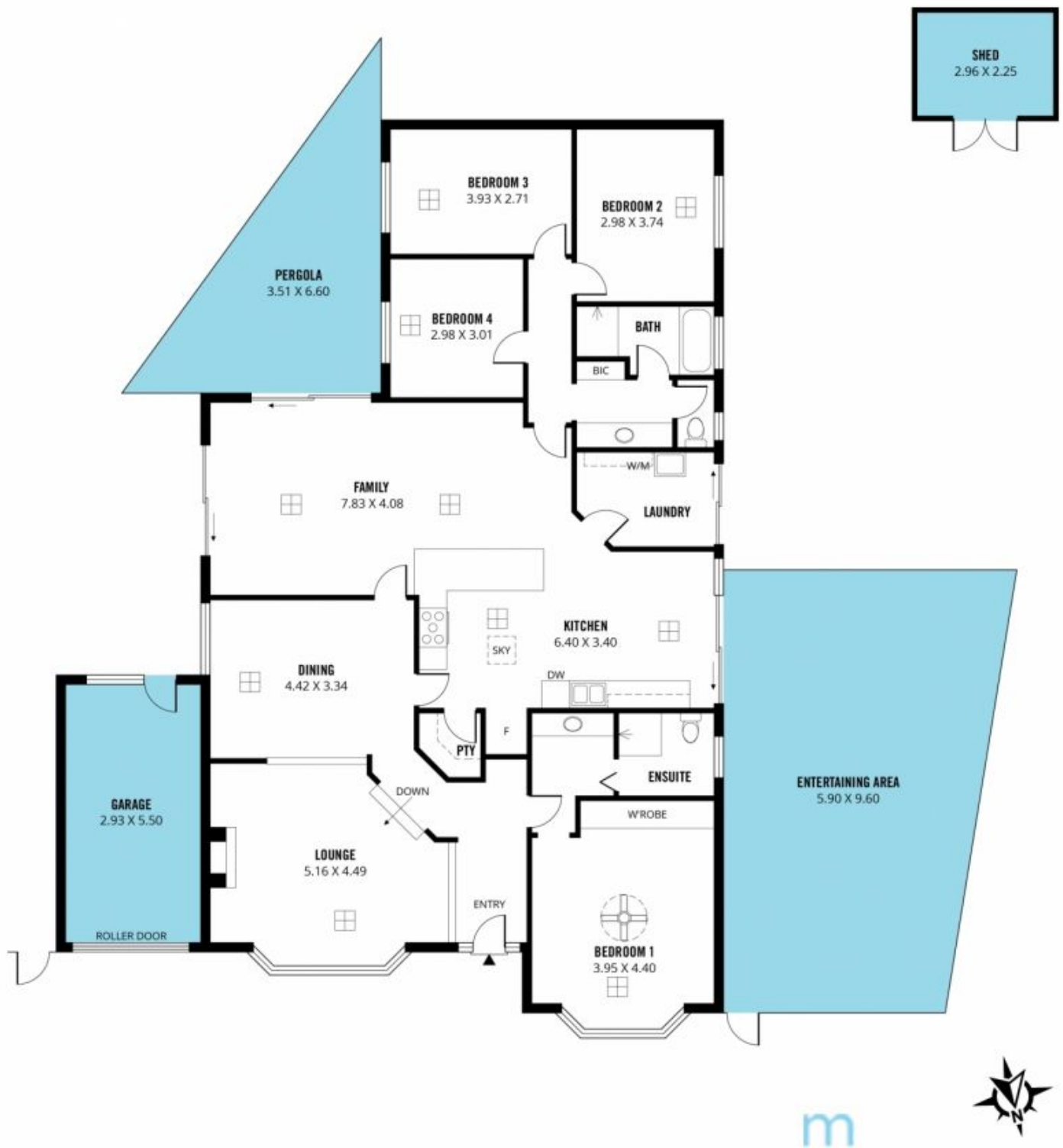


**Danielle Comer**  
08 8322 6111



**Rachael Farror**  
08 8322 6111

<https://www.magain.com.au>  
Magain Real Estate



Scale in metres. This drawing is for illustration purposes only. All measurements are approximate and details intended to be relied upon should be independently verified.

Produced by The Fotobase Group