




# MAGAIN



**11/43 Jordan Drive Morphett Vale SA**

**2**  **1**  **1** 

Positioned at the rear of an appealing and well-maintained complex, this charming two-bedroom home offers a winning combination of comfort, convenience, and a reliable income stream. The property is currently rented to a long-term tenant with a fixed lease in place until August 2025.

Imagine arriving home to beautiful low maintenance gardens, a timeless modern facade and a welcoming porch. Step inside and discover an open plan living and dining room, bathed in natural light, this delightful space boasts a split system air conditioning for ultimate comfort control and neutral colour tones. Complementing the space is a ceiling fan and floating floors, that add a touch of sophistication. The U-shaped kitchen is ready for the home

**Type** : Unit

**Price** : \$ 497,000

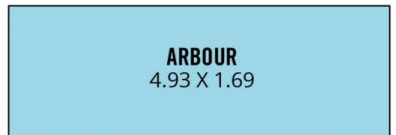
**View** : <https://www.magain.com.au/property/1143-jordan-drive-morphett-vale-sa/8122266>



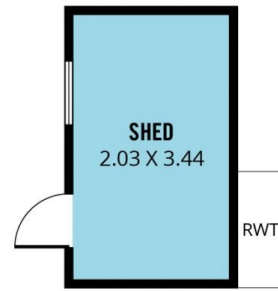
**Jackie Scott**  
**0409090959**

[For full version visit the website](https://www.magain.com.au)

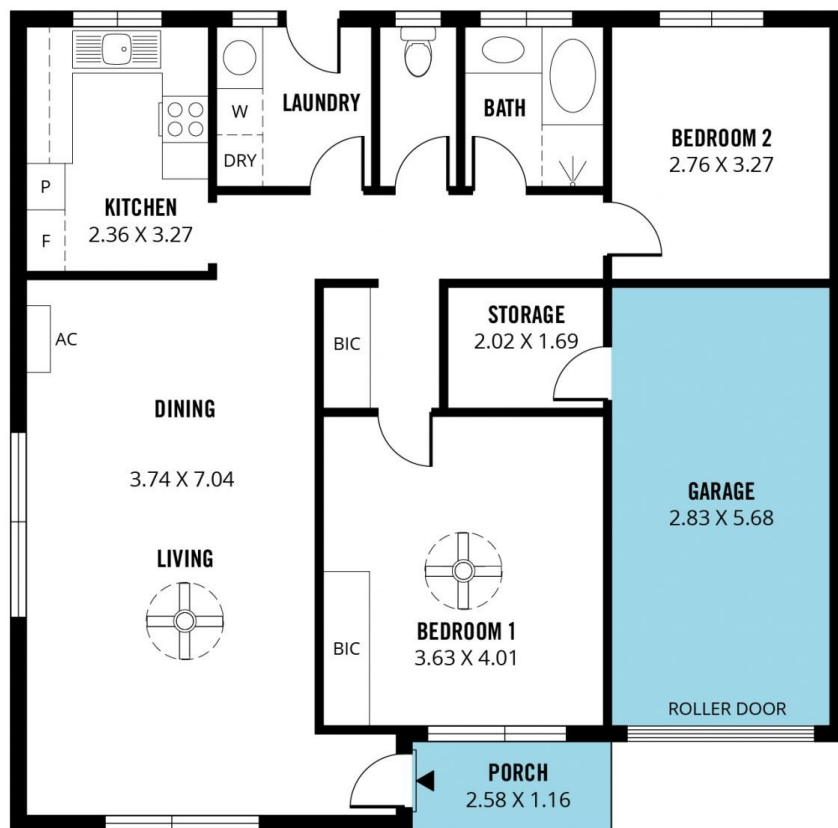
<https://www.magain.com.au>  
Magain Real Estate



APPROX. LOCATION



APPROX. LOCATION



Scale in metres. This drawing is for illustration purposes only. All measurements are approximate and details intended to be relied upon should be independently verified.

Produced by **The Fotobase Group**