

# MAGAIN



**15 Montpelier Square Port Adelaide SA**

**3** **2** **2**

## FAST FACTS

- > \$650.00 per week
- > available 08/10/2024

## DESCRIPTION

- Spacious open-plan living and kitchen area
- The upstairs features an open versatile space, perfect for a home office, play area, or additional living space.
- Modern kitchen featuring stainless steel appliances, gas cooktop, and a dishwasher
- Three well-sized bedrooms with built-in wardrobes
- Master bedroom complete with an en-suite & walk-in robe
- Main Bathroom located upstairs
- One powder room located downstairs
- Ducted reverse-cycle air conditioning throughout

**Type** : Townhouse

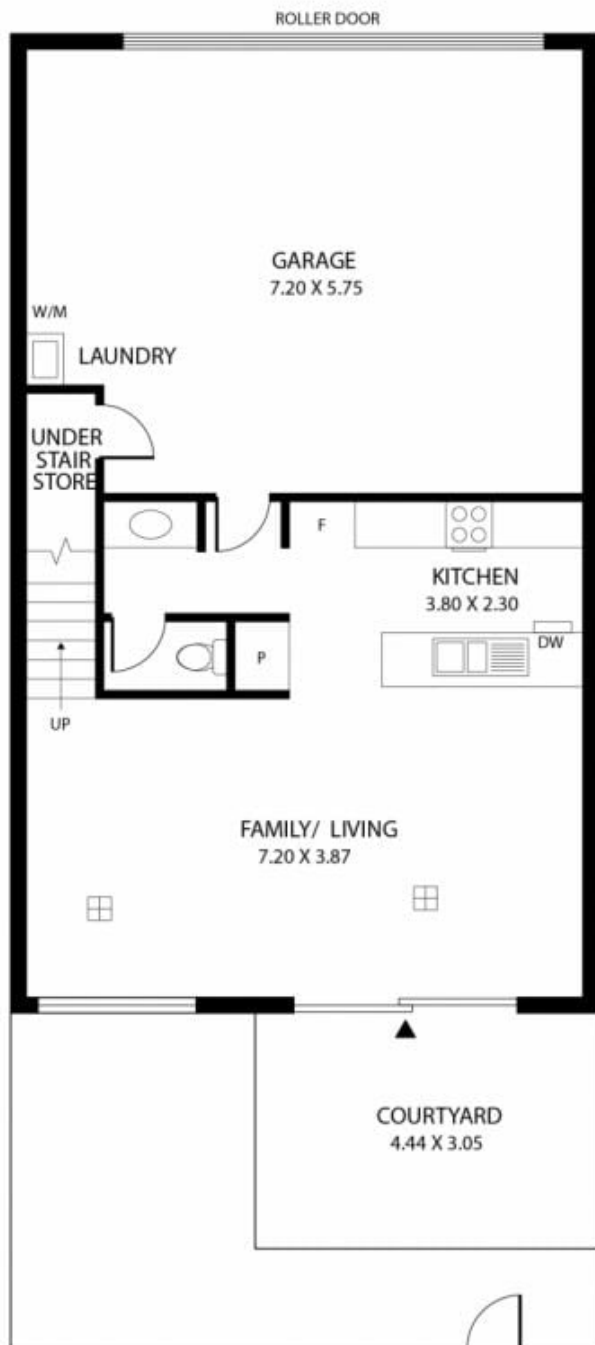
**View** : <https://www.magain.com.au/property/15-montpelier-square-port-adelaide-sa/8133367>



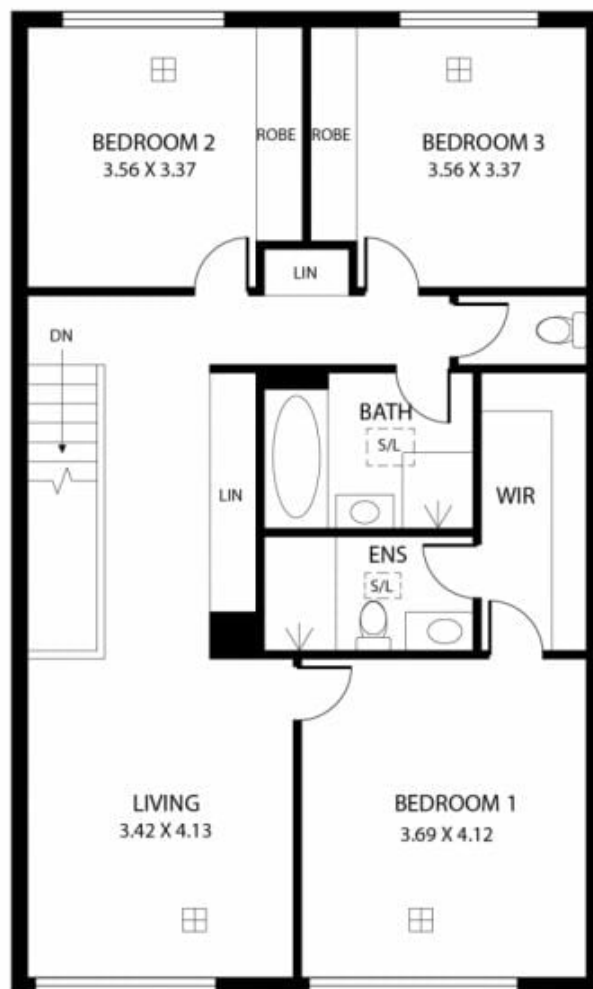
**Stella Chen**  
**0458 185 045**

[For full version visit the website](https://www.magain.com.au)

<https://www.magain.com.au>  
Magain Real Estate



GROUND FLOOR



FIRST FLOOR



Scale in metres. This drawing is for illustration purposes only. All measurements are approximate and details intended to be relied upon should be independently verified.

Produced by **The Fotobase Group**