

# MAGAIN



## 20 Westmoreland Road Morphett Vale SA

3 1 2

Please contact Craig Thomson from Magain Real Estate for all your property advice.

Discover your perfect first home or investment opportunity in the heart of Morphett Vale! This delightful 3-bedroom, 1-bathroom property offers a fantastic lifestyle with convenience and comfort in a sought-after suburb of Adelaide.

### Key Features:

**Spacious Bedrooms:** Three well-sized bedrooms, perfect for a growing family or those needing extra space.

**Kitchen:** Enjoy cooking in a functional kitchen equipped with ample storage and a cozy dining area.

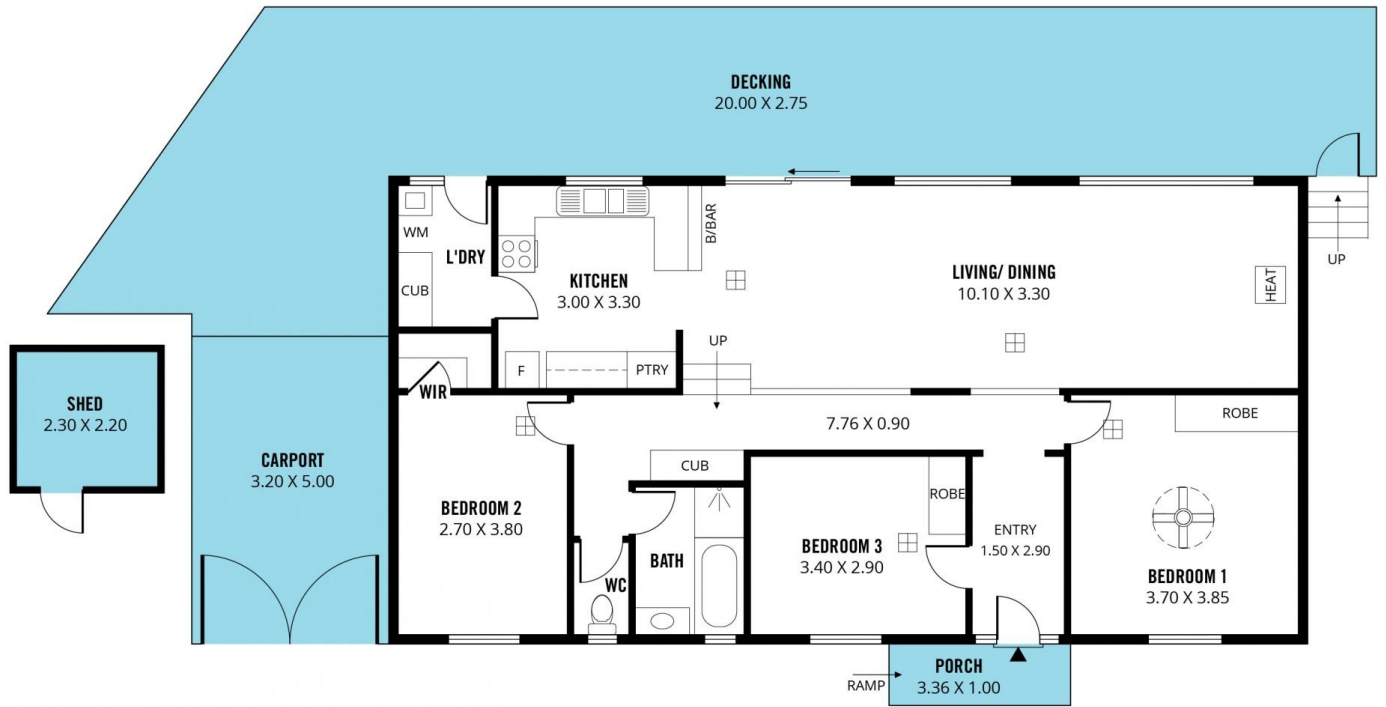
[For full version visit the website](https://www.magain.com.au/property/20-westmoreland-road-morphett-vale-sa/8133994)

<b>Type</b>	: House
<b>Price</b>	: \$ 665,000
<b>Building Size</b>	: 121 sqm
<b>Land Size</b>	: 545 sqm
<b>View</b>	: <a href="https://www.magain.com.au/property/20-westmoreland-road-morphett-vale-sa/8133994">https://www.magain.com.au/property/20-westmoreland-road-morphett-vale-sa/8133994</a>



**Craig Thomson**  
08 8266 2222

<https://www.magain.com.au>  
Magain Real Estate



Scale in metres. This drawing is for illustration purposes only. All measurements are approximate and details intended to be relied upon should be independently verified.

Produced by **The Fotobase Group**