

MAGAIN



2/15 Essex Street Brighton SA

2 1 2

Please contact Sandy Robinson from Magain Real Estate for all your property advice.

From the moment you arrive on this picturesque, tree-lined street, you're drawn toward the beautiful white stone pathway leading to this inviting home. Walk past the established tree and manicured garden, and feel instantly welcomed by its timeless charm. White plantation shutters frame the bay window, enhancing its stunning street presence. And once inside, it truly feels like home.

Bathed in natural light and finished in soft, soothing tones, this meticulously renovated property feels far more spacious than a typical two-bedroom home.

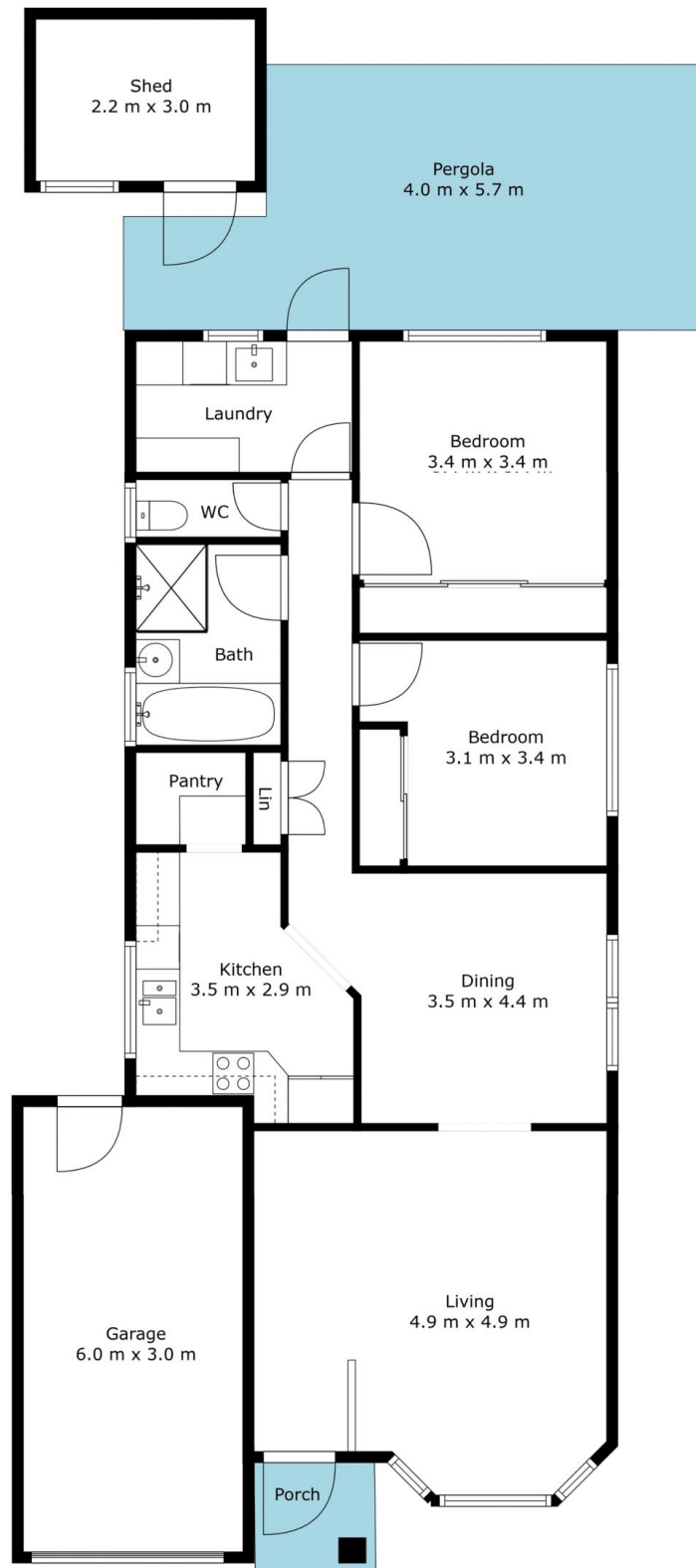
[For full version visit the website](https://www.magain.com.au/property/215-essex-street-brighton-sa/8246031)

Type : Unit
Price : \$ 853,250
Building Size : 102 sqm
Land Size : 209 sqm
View : <https://www.magain.com.au/property/215-essex-street-brighton-sa/8246031>



Sandy Robinson
08 8398 1494

<https://www.magain.com.au>
Magain Real Estate



Internal	118	SQM
External	25	SQM
Total Approx	143	SQM



Scale in metres. This drawing is for illustration purposes only.
 All measurements are approximate and details intended to be relied upon should be independently verified.