

# MAGAIN



## 803/43 Kalgoorlie Avenue Port Noarlunga South SA

Please contact Scott McPharlin from Magain Real Estate for all your property advice.

Not often do opportunities present themselves like this. Located less than 140m from the Esplanade at Port Noarlunga South!

Build your dream home here. With 363m<sup>2</sup> of land, there's scope for so many possibilities.

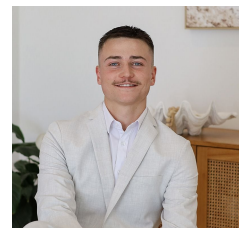
If you are a first home buyer, take advantage of Government grants, with no Stamp Duty and the First Home Builder's Grant of \$15,000. There's also great depreciation possibilities for investors with a brand-new build and huge opportunity for capital growth being so close

[For full version visit the website](https://www.magain.com.au)

<b>Type</b>	: Land
<b>Price</b>	: \$ 530,000
<b>Land Size</b>	: 363 sqm
<b>View</b>	: <a href="https://www.magain.com.au/property/80343-kalgoorlie-avenue-port-noarlunga-south-sa/8313047">https://www.magain.com.au/property/80343-kalgoorlie-avenue-port-noarlunga-south-sa/8313047</a>



**Scott McPharlin**  
08 8382 0029



**Patrick Chay**  
08 8382 0029

<https://www.magain.com.au>  
Magain Real Estate