

# MAGAIN



## 38 Erebus Circuit Morphett Vale SA

3 2 2

Nestled in a peaceful, family-friendly pocket of Morphett Vale, this beautifully maintained home offers outstanding value for a range of buyers - whether you're stepping into the market for the first time, looking to downsize without compromise, or seeking a smart investment with strong rental potential.

Positioned on a generous 550m<sup>2</sup> block, this three-bedroom, two-bathroom residence boasts a practical and spacious layout with multiple living zones, ideal for both everyday living and entertaining. Built in the early 2000s, the home presents a timeless façade and a comfortable interior ready to move in and enjoy, while still offering scope to add your own personal touch over time.

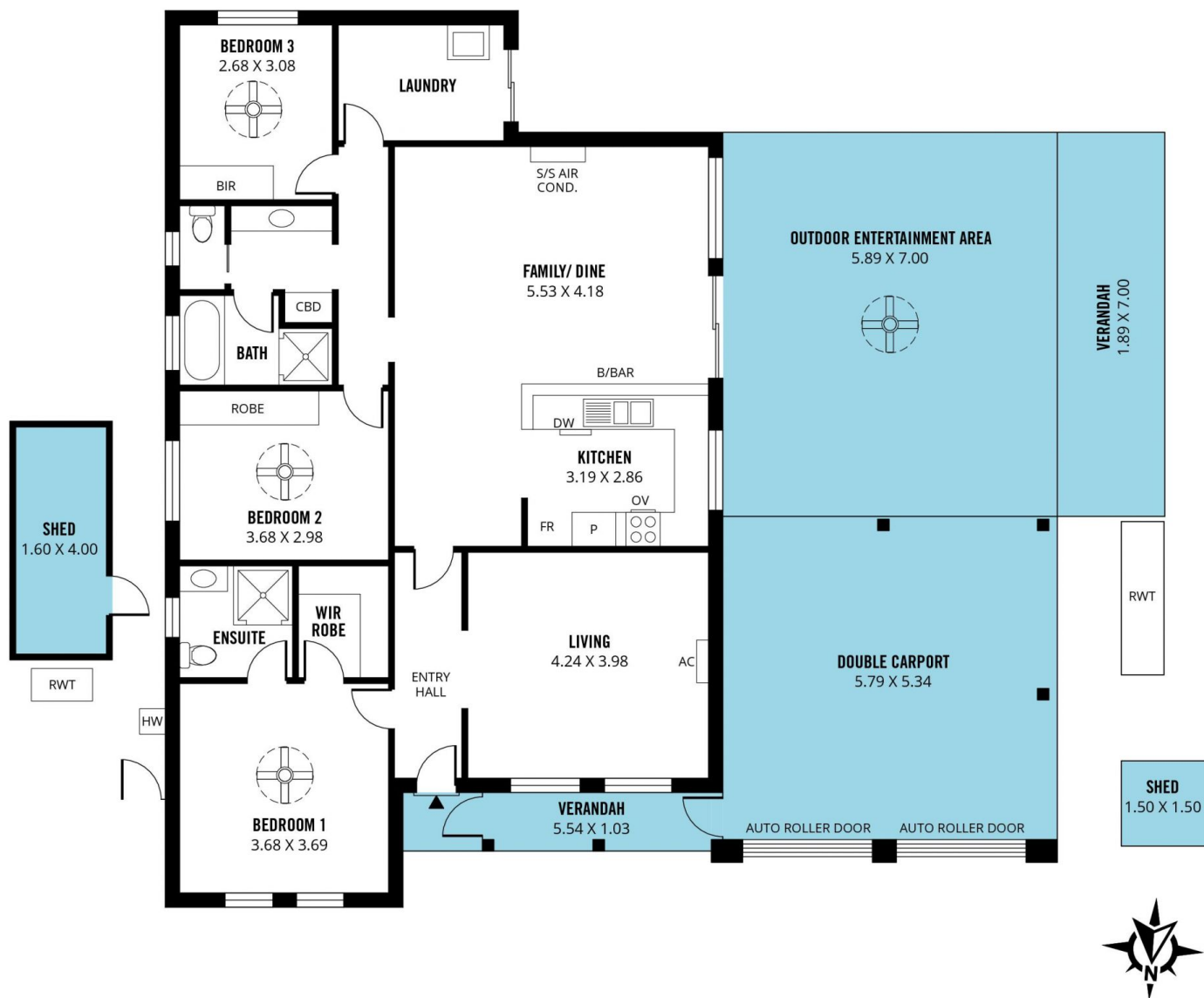
**Type** : House  
**Price** : Under Contract  
**Building Size** : 134 sqm  
**Land Size** : 550 sqm  
**View** : <https://www.magain.com.au/property/38-erebus-circuit-morphett-vale-sa/8326947>



**Craig Thomson**  
08 8366 2292

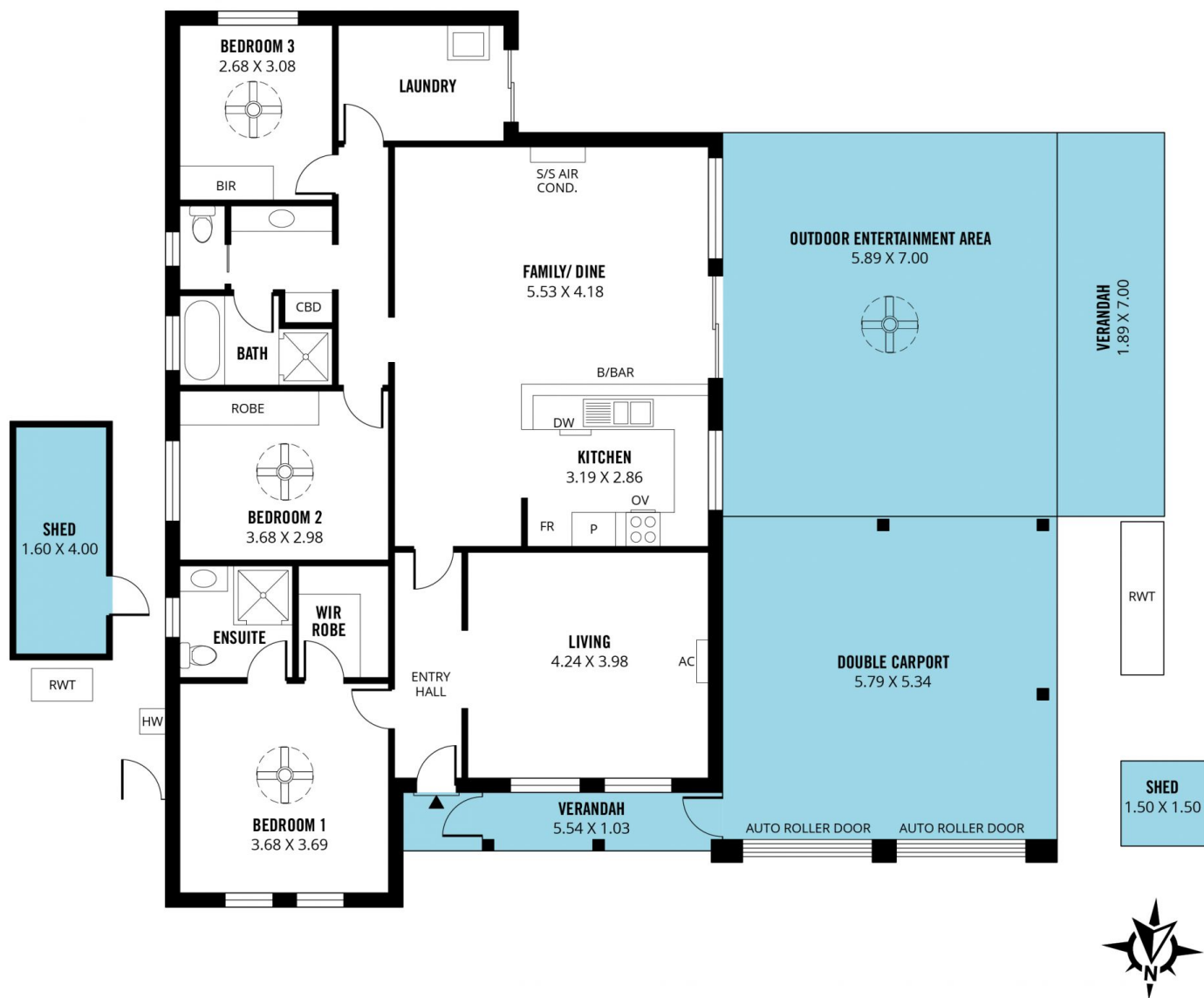
[For full version visit the website](https://www.magain.com.au)

<https://www.magain.com.au>  
Magain Real Estate



Scale in metres. This drawing is for illustration purposes only. All measurements are approximate and details intended to be relied upon should be independently verified.

Produced by The Fotobase Group



Scale in metres. This drawing is for illustration purposes only. All measurements are approximate and details intended to be relied upon should be independently verified.

Produced by **The Fotobase Group**