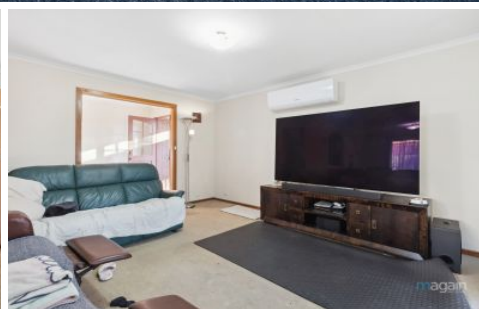
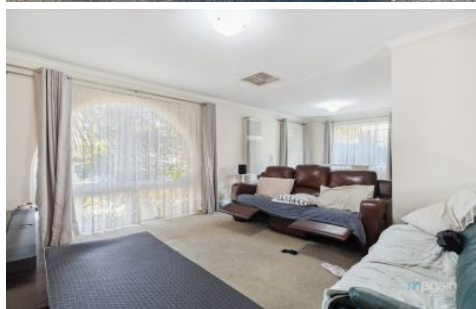


MAGAIN



90 Wheatsheaf Road Morphett Vale SA

3  1  1 

Please contact Travis Denham and Andrew Fox from Magain Real Estate for all your property advice.

This property is currently tenanted at \$1040 per fortnight with a lease date until 05/05/2025.

Originally built in 1977 and perfectly positioned in a highly sought-after location, this charming Torrens-titled three-bedroom home effortlessly combines classic character with tasteful modern updates. Designed with both style and practicality in mind, it offers a warm, functional living space that's ideal for first home buyers, savvy investors, or those looking to downsize without compromise.

[For full version visit the website](https://www.magain.com.au)

Type : House
Price : \$ 701,500
Building Size : 110 sqm
Land Size : 590 sqm
View : <https://www.magain.com.au/property/90-wheatsheaf-road-morphett-vale-sa/8327835>



Travis Denham
08 8298 1494



Andrew Fox
08 8298 1494

<https://www.magain.com.au>
Magain Real Estate



m

Scale in metres. This drawing is for illustration purposes only. All measurements are approximate and details intended to be relied upon should be independently verified.

Produced by **The Fotobase Group**