

MAGAIN



10 Virgo Avenue Warradale SA

5 2 4

Please contact Sandy Robinson from Magain Real Estate for all your property advice.

Welcome to a residence that sets a new standard in family living. Meticulously rebuilt in 2023 on a generous 731 sqm allotment, this single-level designer home delivers a rare combination of architectural finesse, family functionality and high-end inclusions - all wrapped in warmth and timeless appeal.

Designed and thoughtfully curated by an award winning building designer, this home achieves a seamless connection between its original character and the striking new extension - blending the past and present into one cohesive and unforgettable living experience.

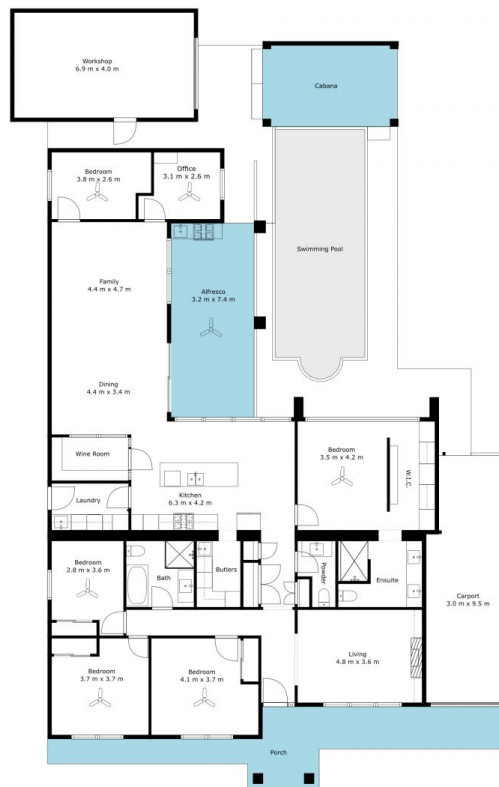
[For full version visit the website](https://www.magain.com.au/property/10-virgo-avenue-warradale-sa/8357187)

Type : House
Price : \$ 2,200,000
Building Size : 269 sqm
Land Size : 731 sqm
View : <https://www.magain.com.au/property/10-virgo-avenue-warradale-sa/8357187>



Sandy Robinson
08 8398 1494

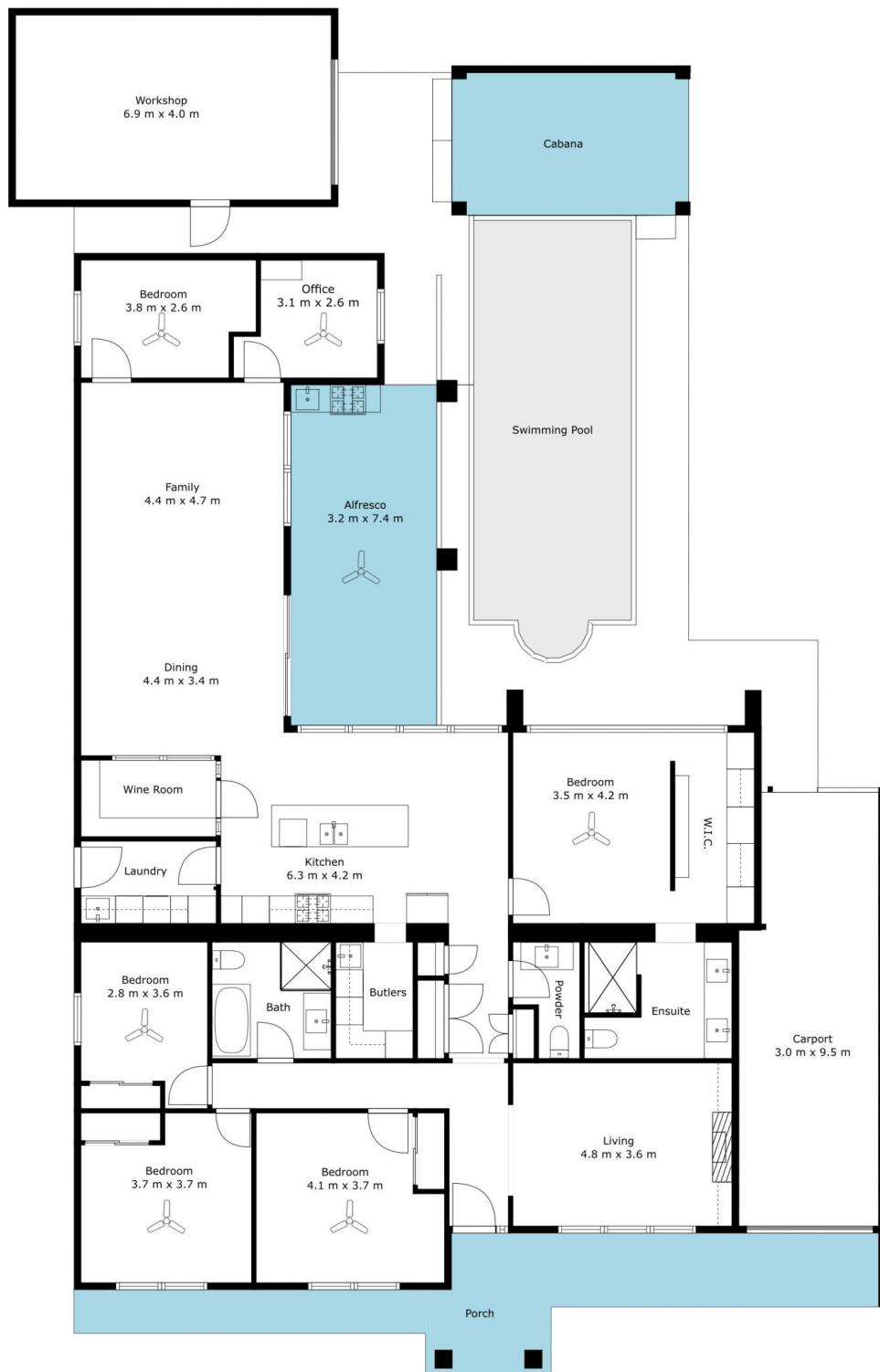
<https://www.magain.com.au>
Magain Real Estate



Living	217	SQM
Workshop	28	SQM
Carport	27	SQM
Alfresco	24	SQM
Porch	20	SQM
Total Approx	316	SQM



Scale In Metres. This Drawing Is For Illustration Purposes Only.
All Measurements Are Approximate And Details Intended To Be Relied Upon Should Be Independently Verified. All Measurements Are Approximate.



Living	217	SQM
Workshop	28	SQM
Carport	27	SQM
Alfresco	24	SQM
Porch	20	SQM
Total Approx	316	SQM



Scale In Metres. This Drawing Is For Illustration Purposes Only.
All Measurements Are Approximate And Details Intended To Be Relied Upon Should Be Independently Verified. All Measurements Are Approximate.