

MAGAIN



18 Priya Court Port Pirie SA

3 1 2

Call Danielle Comer to book your inspection today.

Positioned in the sought-after suburb of Risdon Park South, a desirable pocket of Port Pirie, and only a stone's throw away from the Port Pirie Golf Club, this impressive family home offers a generous 215sqm of living space, a functional layout, and excellent modern features, ideal for growing families or savvy investors.

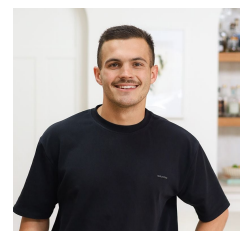
Built in 2004 by Distinctive Homes, the property is thoughtfully designed with a flowing floor plan that maximises both comfort and practicality. At the front of the home, the oversized master bedroom serves as a true parents' retreat, complete with a huge walk-in robe and direct access to the main bathroom, creating a

[For full version visit the website](https://www.magain.com.au/property/18-priya-court-port-pirie-sa/8357564)

Type	: House
Price	: \$549k -\$599k
Building Size	: 215 sqm
Land Size	: 524 sqm
View	: https://www.magain.com.au/property/18-priya-court-port-pirie-sa/8357564

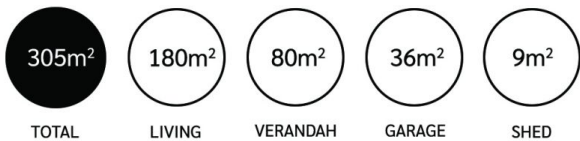
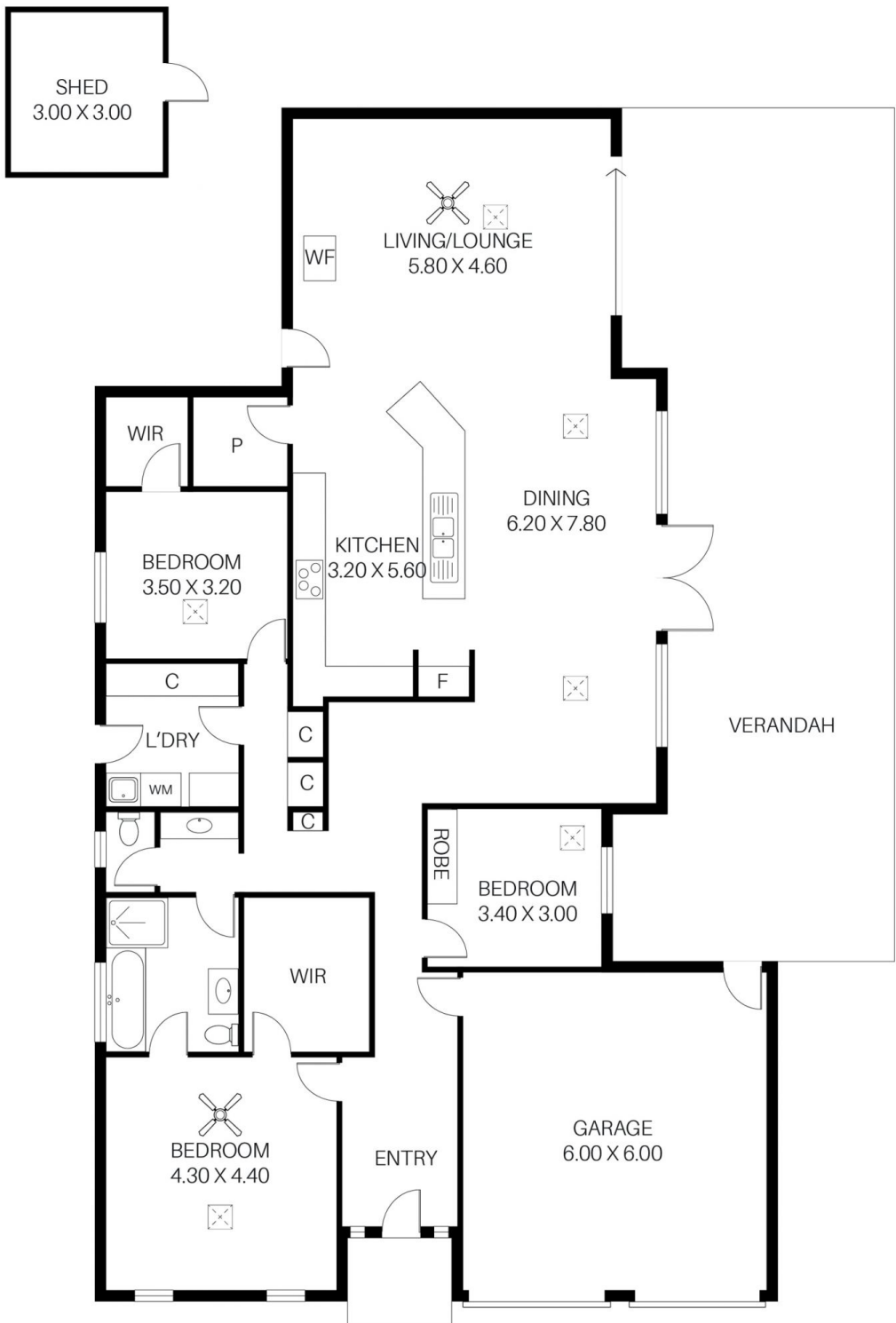


Danielle Comer
08 8322 6111



Bailey Fielke
08 8522 2715

<https://www.magain.com.au>
Magain Real Estate



Scale is in metres. This drawing is for illustration purposes only. All measurements are approximate and details intended to be relied upon should be independently verified.