

MAGAIN



15A Surrey Parade Morphett Vale SA

3 2 2

Please contact Scott McPharlin from Magain Real Estate for all your property advice.

Perfect for downsizers, first home buyers and investors alike, this modern home is neat, tidy and low maintenance. It's situated in such a handy location too, close to great schools, lots of shopping options, public transport, and an entry point to the Southern Expressway.

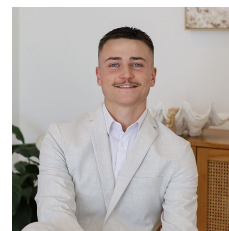
High ceilings and downlights are combined with 3 good sized bedrooms, tons of storage and a lovely open plan living and dining space at the rear of the home. The master suite has an awesome walk-through robe and sparkling ensuite. The family bathroom is of excellent size. It features a full-sized bath for soaking in, a larger than average

[For full version visit the website](https://www.magain.com.au/property/15a-surrey-parade-morphett-vale-sa/8367967)

Type : House
Price : \$ 772,500
Building Size : 159 sqm
Land Size : 380 sqm
View : <https://www.magain.com.au/property/15a-surrey-parade-morphett-vale-sa/8367967>

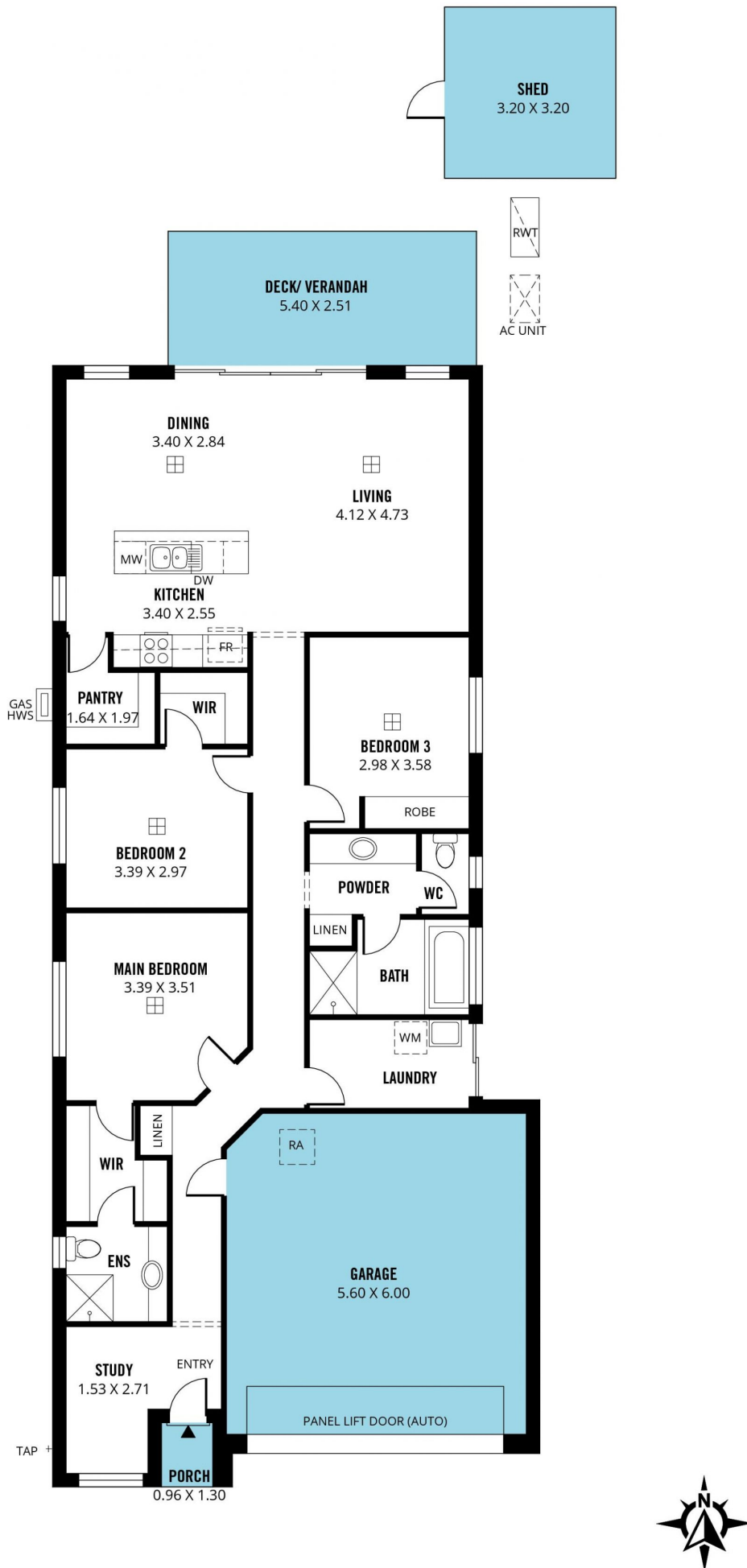


Scott McPharlin
08 8282 8828



Patrick Chay
08 8282 8828

<https://www.magain.com.au>
Magain Real Estate



Scale in metres. This drawing is for illustration purposes only. All measurements are approximate and details intended to be relied upon should be independently verified.

Produced by The Fotobase Group