

# MAGAIN



## 14 Gerald Court Christie Downs SA

3 2 4

This updated family home is just a little bit different. Neat and tidy, and updated to incorporate a beautiful light colour scheme throughout, it has such a lovely, welcoming feel. Set on a big block of around 760m<sup>2</sup>, on the high side of the road, the views over the park are superb. There's a playground to entertain the kids too!

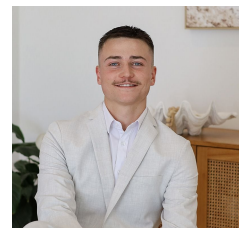
So bright and functional there's hard floors throughout making this home easy to keep clean, and perfect for allergy sufferers. Both bathrooms feature a large shower alcove, tiles all the way to the ceiling, and plenty of storage for all your bits and bobs. The kitchen has been updated too, to include a bright white colour palette. There's plenty of bench space for your appliances, as well as a dishwasher for easy clean ups.

[For full version visit the website](https://www.magain.com.au/property/14-gerald-court-christie-downs-sa/8375878)

**Type** : House  
**Price** : Best offers by 4pm 1st July (USP)  
**Land Size** : 760 sqm  
**View** : <https://www.magain.com.au/property/14-gerald-court-christie-downs-sa/8375878>



**Scott McPharlin**  
08 8382 0029



**Patrick Chay**  
08 8382 0029

<https://www.magain.com.au>  
Magain Real Estate

