

# MAGAIN



## 19 Seaborough Road Elizabeth Park SA

3 1 4

Set on a generous 777m2 allotment in a growing pocket of Elizabeth Park, 19 Seaborough Road presents an exciting opportunity for developers, land-bankers, or investors looking to capitalise on future growth while earning a steady return.

Zoned General Neighbourhood and positioned on a flat, rectangular block, this property offers excellent redevelopment potential (STCC). Whether you're considering a small-scale multi-dwelling project or planning for future capital gain, the possibilities here are compelling.

- Sizeable allotment with development potential (STCC)
- 23m Frontage
- Zoned General Neighbourhood - flexible and future-ready

[For full version visit the website](https://www.magain.com.au/property/19-seaborough-road-elizabeth-park-sa/8381612)

**Type** : House  
**Price** : Under Contract  
**Building Size** : 111 sqm  
**Land Size** : 777 sqm  
**View** : <https://www.magain.com.au/property/19-seaborough-road-elizabeth-park-sa/8381612>



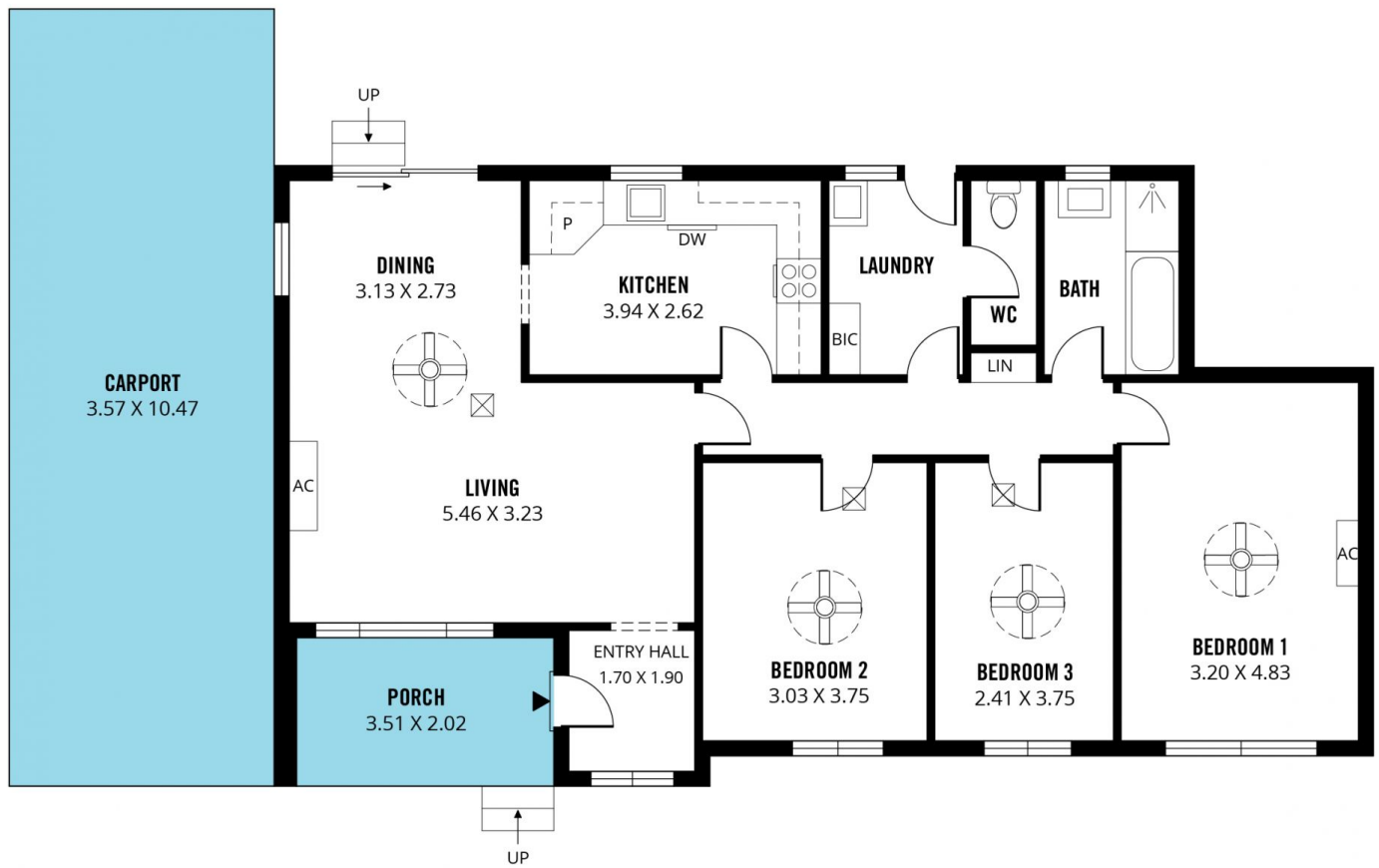
**Baz Rampal**  
08 8281 6888

<https://www.magain.com.au>  
Magain Real Estate



Scale in metres. This drawing is for illustration purposes only. All measurements are approximate and details intended to be relied upon should be independently verified.

Produced by **The Fotobase Group**



Scale in metres. This drawing is for illustration purposes only. All measurements are approximate and details intended to be relied upon should be independently verified.

Produced by **The Fotobase Group**