

# MAGAIN



## 12 David Crescent Christie Downs SA

3 1 2

This home has it all. Perfect for first home buyers, investors and downsizers alike, there's quite literally nothing to do here. All the hard work has been done with a complete top-to-bottom impressive renovation including new fencing and landscaping. You could be forgiven for thinking it's a brand-new home!

Ultra-modern and sophisticated finishes have been combined with many practical features such as laminate flooring throughout, ample storage and simple, easy-to-maintain outdoor areas. Set on a corner block, there's scope to park a caravan, trailer or boat off the street.

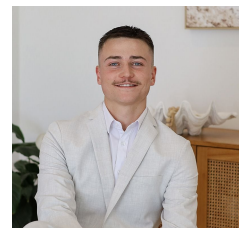
Little touches throughout include lovely brand-new window

[For full version visit the website](https://www.magain.com.au/property/12-david-crescent-christie-downs-sa/8403883)

**Type** : House  
**Price** : \$629k - \$669k  
**Land Size** : 531 sqm  
**View** : <https://www.magain.com.au/property/12-david-crescent-christie-downs-sa/8403883>

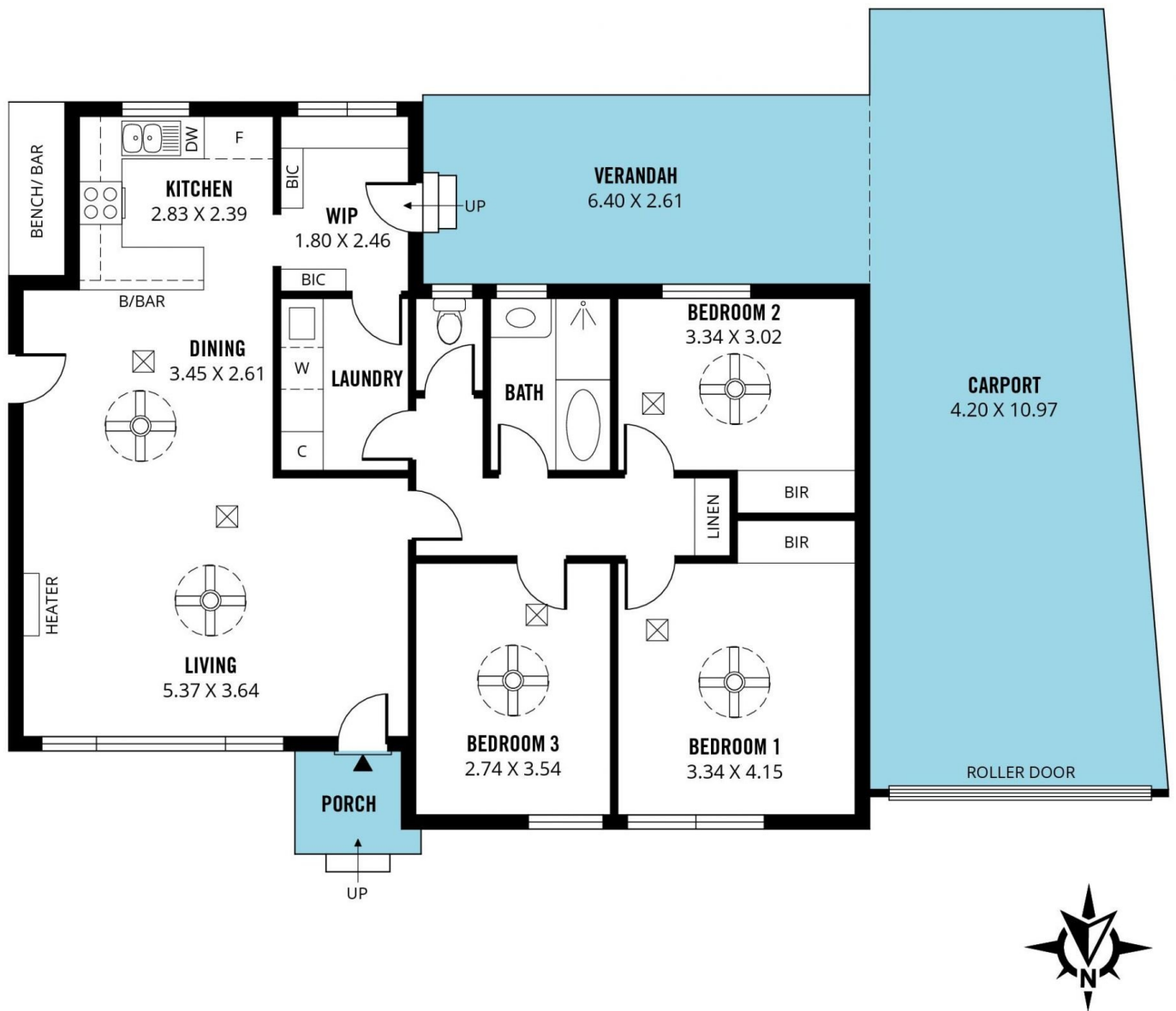


**Scott McPharlin**  
08 8382 0029



**Patrick Chay**  
08 8382 0029

<https://www.magain.com.au>  
Magain Real Estate



Scale in metres. This drawing is for illustration purposes only. All measurements are approximate and details intended to be relied upon should be independently verified.

Produced by **The Fotobase Group**