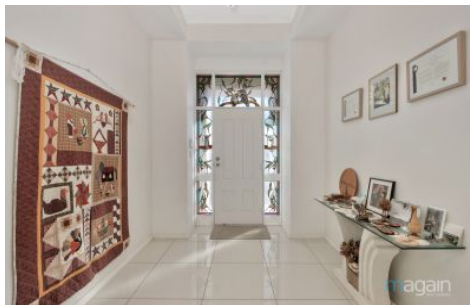


MAGAIN



6 Kingfisher Drive Hewett SA

5 3 2

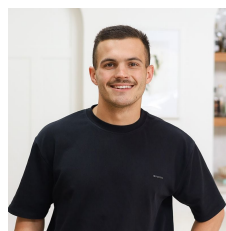
Please contact Bailey Fielke or Grant Fielke from Magain Real Estate for all your property advice.

Set on a generous 980sqm allotment in the highly desirable suburb of Hewett, this spacious family residence offers a perfect blend of comfort, flexibility, and convenience. Built in 1995, this well presented home features up to 5 flexible bedrooms, including a well-appointed main suite with built-in wardrobes, a walk-in robe, and a private ensuite-ideal for parents seeking their own retreat.

Bedrooms two and three also feature built-in robes, providing ample storage for the whole family. Thoughtfully designed for everyday living and entertaining, the home boasts a large verandah and an inviting outdoor

[For full version visit the website](https://www.magain.com.au/property/6-k-ingfisher-drive-hewett-sa/8406754)

Type : House
Price : \$ 901,000
Building Size : 231 sqm
Land Size : 980 sqm
View : <https://www.magain.com.au/property/6-k-ingfisher-drive-hewett-sa/8406754>



Bailey Fielke
08 8522 2715



Grant Fielke
08 8522 2715

<https://www.magain.com.au>
Magain Real Estate

6 Kingfisher Drive,
HEWETT



Living:	259.00SQ.M
Garage:	33.06SQ.M
Verandah:	86.00SQ.M
Porch:	4.40SQ.M
Shed:	9.00SQ.M

TOTAL: 391.46SQ.M

This drawing is for illustration purposes only. All measurements are internal and approximate. Details intended to be relied upon should be independently verified.

