

MAGAIN

LAND
ALIVE
magain
FIELKE

Vintage Estate
Barossa's finest place to live

20.28m
31.51m
629m²
31.50m
19.67m

Lot 35 Vintage Crescent

Scale in metres. This drawing is for illustration purposes only.
All measurements are approximate and details intended to be relied upon should be independently verified.

35/ Vintage Crescent Nuriootpa SA

Please contact Grant Fielke from Magain Real Estate for all your property advice.

Whether you are buying your first home, the kids have flown the coop, or you're ready to settle down and nest, Vintage Estate offers you the perfect opportunity to get more out of life. Vintage Estate is set against a backdrop of iconic heritage buildings and contemporary homes, in an area that's rich in character. Enjoy the tapestry of vines, character homes, cosmopolitan eateries and eclectic shops that are all waiting to be discovered. And with the vibrant Barossa at your doorstep, life is ready to begin as soon as you move in.

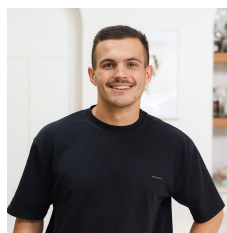
Disclaimer: All floor plans, photos and text are for illustration purposes only and are not intended to be part of any contract. All measurements are approximate and details intended to be relied upon should be independently verified.

RLA 332950

Magain Real Estate

[For full version visit the website](https://www.magain.com.au)

Type : Land
Price : \$305k
Land Size : 629 sqm
View : <https://www.magain.com.au/property/35-vintage-crescent-nuriootpa-sa/8406768>



Bailey Fielke
08 8522 2715



Grant Fielke
08 8522 2715