

# MAGAIN



5/365a Marion Road Plympton SA

2 1 1

Please contact Josh Morrison for more details or to register your interest..

Currently tenanted until July 2026 @ \$455 p/w to good tenants.

This 2 bedroom unit is set back from the main road and offers the convenience of being centrally located, close the City, Marion and Glenelg and is the ideal Investment or first home. The home has an open plan kitchen/meals, lounge room with split system air conditioning and access out to your own private courtyard area.

The kitchen is fitted with ample cupboards and quality appliances including a dishwasher. Each bedroom is fitted

**Type** : Unit  
**Price** : \$499k - \$539k  
**View** : <https://www.magain.com.au/property/5365a-marion-road-plympton-sa/8417716>



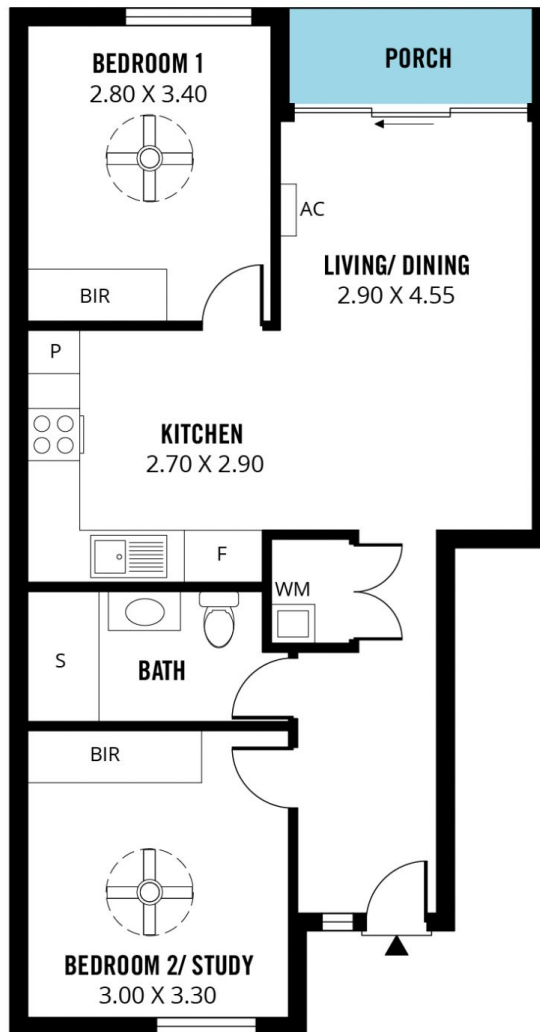
**Josh Morrison**  
0432 306 842



**Steve Krause**  
0410 507 138

[For full version visit the website](https://www.magain.com.au)

<https://www.magain.com.au>  
Magain Real Estate



Scale in metres. This drawing is for illustration purposes only. All measurements are approximate and details intended to be relied upon should be independently verified. Produced by **The Fotobase Group**