

MAGAIN



12 David Crescent Christie Downs SA

3 1 2

Please contact Scott McPharlin from Magain Real Estate for all your property advice.

This home has it all. Perfect for first home buyers, investors and downsizers alike, there's quite literally nothing to do here. All the hard work has been done with a complete top-to-bottom impressive renovation including new fencing and landscaping. You could be forgiven for thinking it's a brand-new home!

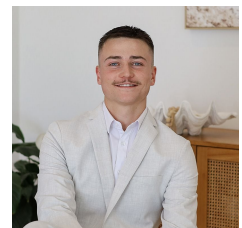
Ultra-modern and sophisticated finishes have been combined with many practical features such as laminate flooring throughout, ample storage and simple, easy-to-maintain outdoor areas. Set on a corner block, there's scope to park a caravan, trailer or boat off the

[For full version visit the website](https://www.magain.com.au/property/12-david-crescent-christie-downs-sa/8419952)

Type : House
Price : \$ 740,000
Land Size : 531 sqm
View : <https://www.magain.com.au/property/12-david-crescent-christie-downs-sa/8419952>



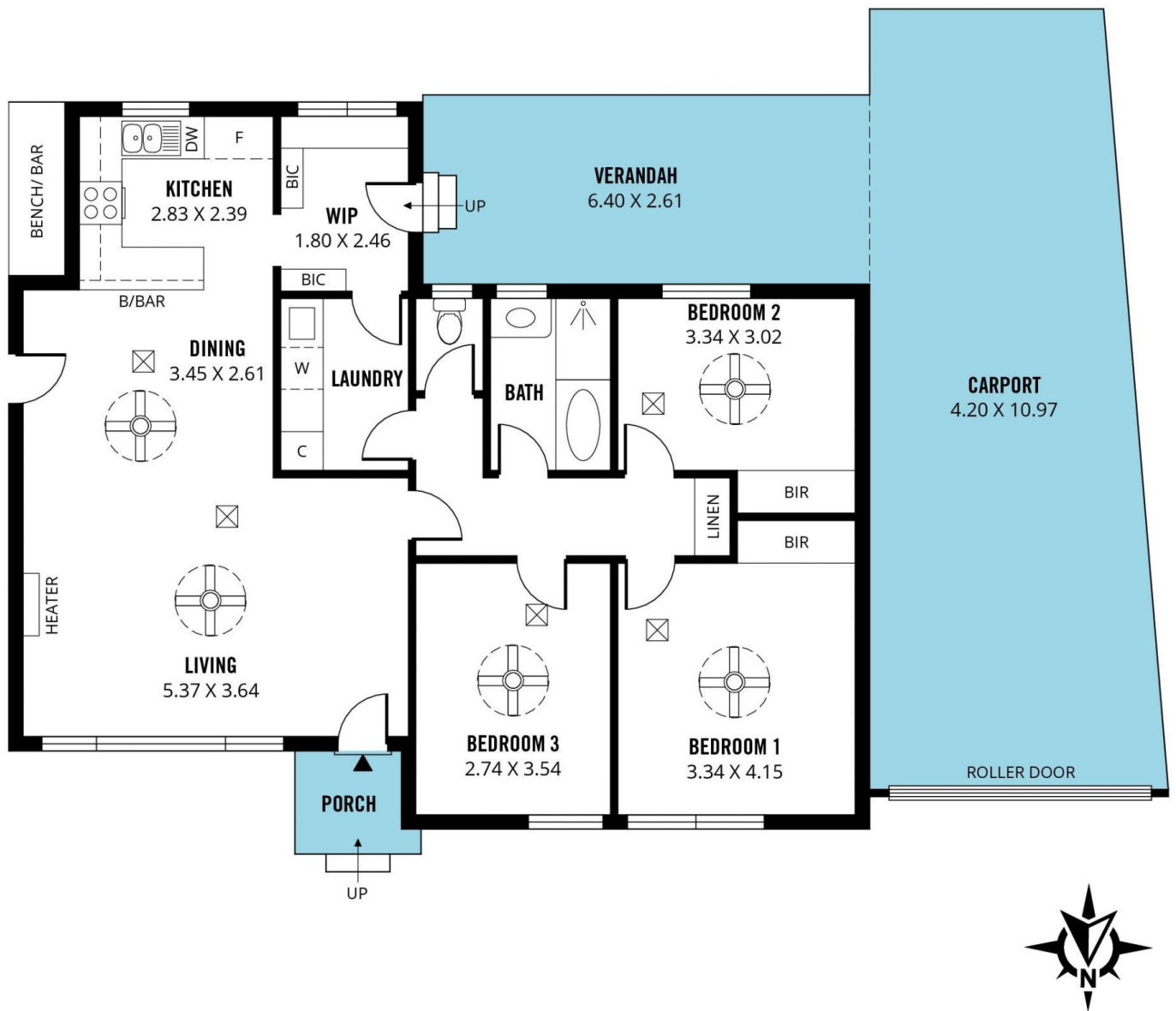
Scott McPharlin
08 8382 0029



Patrick Chay
08 8382 0029

<https://www.magain.com.au>
Magain Real Estate

Shop 2, 32 Saltfleet Street Port Noarlunga SA
08 8382 0029



Scale in metres. This drawing is for illustration purposes only. All measurements are approximate and details intended to be relied upon should be independently verified.

Produced by **The Fotobase Group**