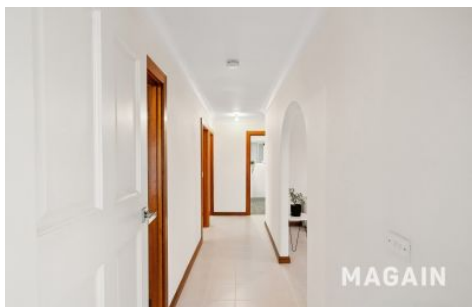


MAGAIN



1 Laima Court Hackham SA

3 1 2

Set proudly on a generous corner allotment in a peaceful cul-de-sac, this impeccably presented solid brick home offers quality, modern convenience, and outstanding potential. With its striking rendered façade, front window shutters, and low-maintenance landscaping, this home has a commanding street presence complemented by the privacy and elevation of its high-side position.

Located ideally within close proximity to all of life's necessary amenities including shops, schools, public transport and medical facilities. Just a short 10 minute drive to SA's best beaches, the Southern Expressway and the McLaren Vale Wine Region and its multiple cellar doors, the lifestyle opportunities that present here are worth the effort alone!

[For full version visit the website](https://www.magain.com.au)

Type : House
Price : \$649k - \$699k
Building Size : 109 sqm
Land Size : 615 sqm
View : <https://www.magain.com.au/property/1-laima-court-hackham-sa/8420765>



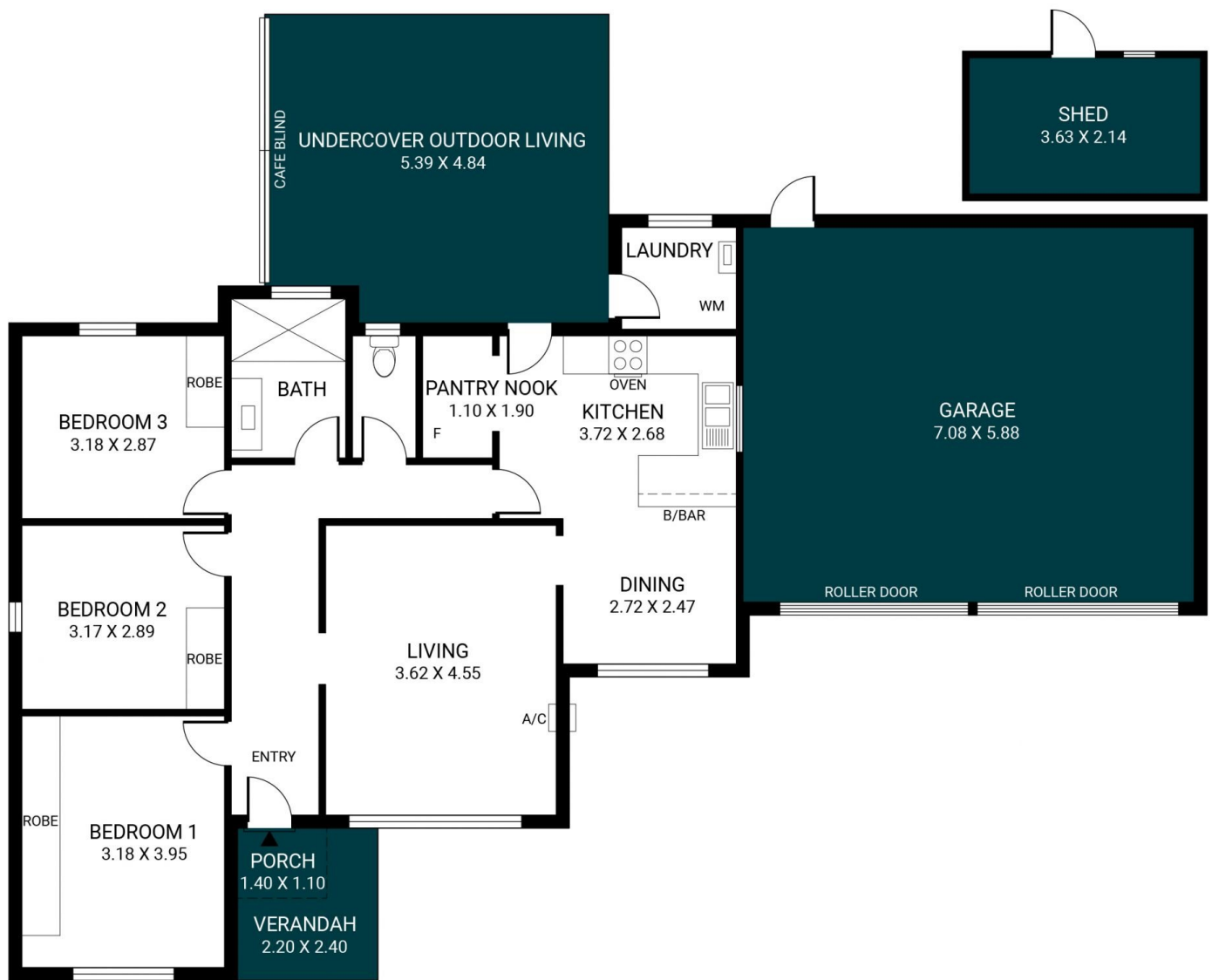
David Hams
08 8366 2230



Mitch Portlock
08 8366 2230

<https://www.magain.com.au>
Magain Real Estate

Shop 60, Seaford Central Shopping Centre, Commercial Road
08 8366 2230



Scale in metres. This drawing is for illustration purposes only. All measurements are approximate and details intended to be relied upon should be independently verified.

Produced by **The Fotobase Group**