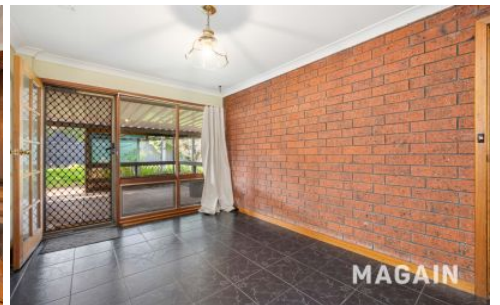


# MAGAIN



## 8 Abbott Avenue Morphett Vale SA

3 2 4

Please contact Craig Thomson from Magain Real Estate for all your property advice.

Positioned on a generous block in a quiet, family-friendly street, 8 Abbott Avenue, Morphett Vale offers the perfect blend of comfort, space, and convenience. Whether you're a first home buyer, growing family or savvy investor, this well-maintained property is sure to tick all the boxes.

Inside, the home features a practical 3-bedroom, 2-bathroom layout designed for easy living. The spacious main bedroom includes an ensuite for added privacy, while the additional bedrooms are well-sized and serviced by a central bathroom.

[For full version visit the website](https://www.magain.com.au/property/8-abbott-avenue-morphett-vale-sa/8420998)

<b>Type</b>	: House
<b>Price</b>	: \$619k - \$679k
<b>Building Size</b>	: 120 sqm
<b>Land Size</b>	: 635 sqm
<b>View</b>	: <a href="https://www.magain.com.au/property/8-abbott-avenue-morphett-vale-sa/8420998">https://www.magain.com.au/property/8-abbott-avenue-morphett-vale-sa/8420998</a>



**Craig Thomson**  
08 8366 2292

<https://www.magain.com.au>  
Magain Real Estate

52 Hillier Road Morphett Vale SA  
08 8366 2292



Scale in metres. This drawing is for illustration purposes only. All measurements are approximate and details intended to be relied upon should be independently verified.

Produced by **The Fotobase Group**