

MAGAIN



15 Glen Eyre Court ABERFOYLE PARK SA

3 2 2

Sited in an outstanding cul de sac location within easy walking distance to transport and amongst other quality homes is this superb residence that you would be proud to call home. Immaculate quality prevails throughout this spacious villa along with tasteful neutral tonings.

The delightful formal lounge is at the front of the home along with the double garage which has internal and rear access.

The stunning new kitchen with dishwasher, water filter and pantry is adjacent to the large dine area and family room which boasts stunning Bamboo flooring. This area opens out to a delightful undercover entertaining area and private manicured gardens.

There are three large bedrooms, two with walk in robes, ensuite and a 3 way main bathroom. The master bedroom

Type : House
Building Size : 18 sqm
Land Size : 450 sqm
View : <https://www.magain.com.au/property/15-glen-eyre-court-aberfoyle-park-sa/8421523>



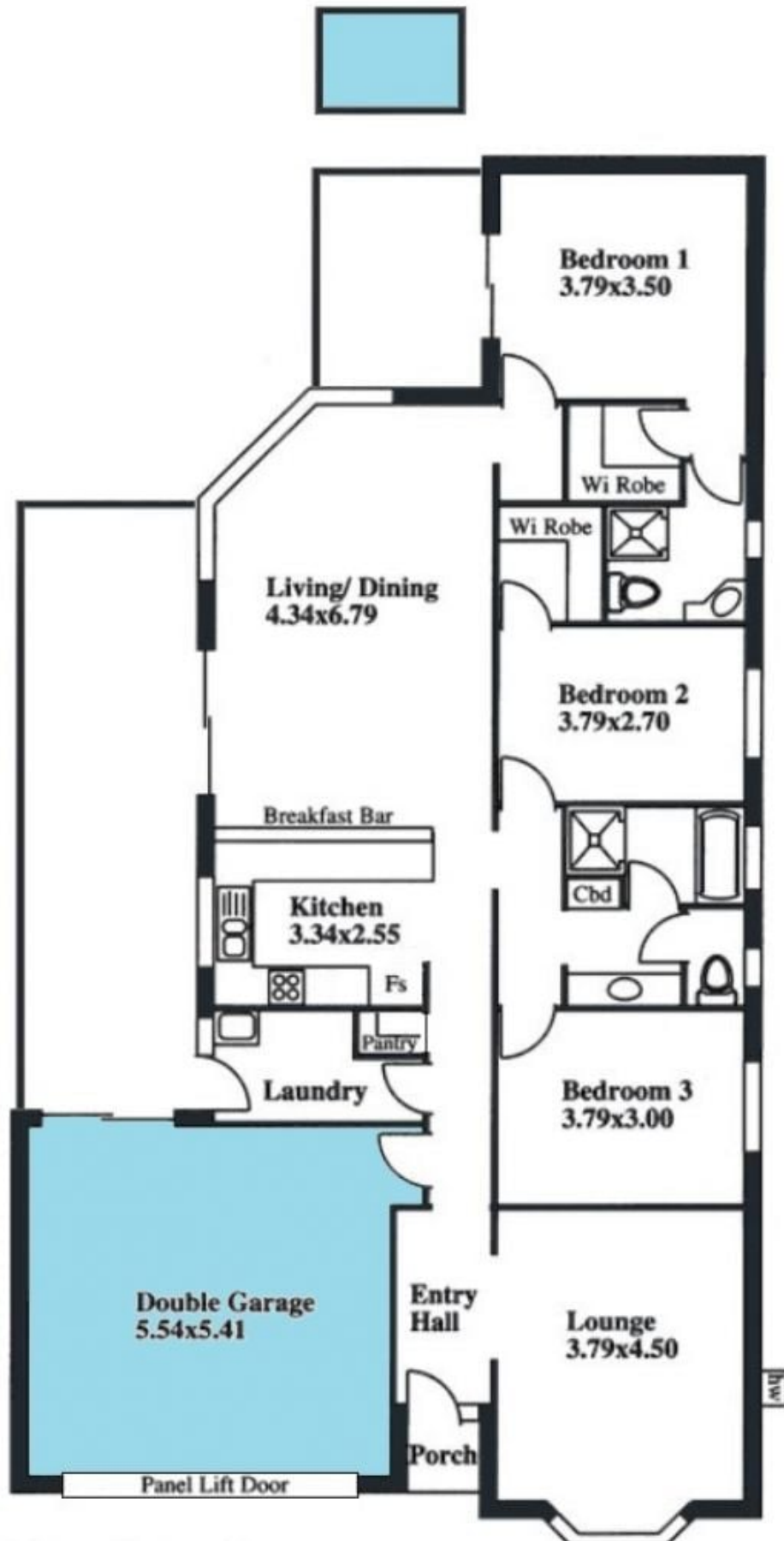
Jane Nelson
08 8277 1777

[For full version visit the website](https://www.magain.com.au)

<https://www.magain.com.au>
Magain Real Estate

765 Marion Road Ascot Park SA
08 8277 1777

15 Glen Eyre Court Aberfoyle Park, South Australia.



Picture intended as a reference only. Any specific measurements required should be obtained by an independent surveyor.