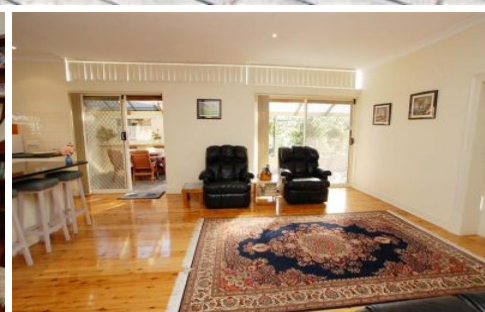


# MAGAIN



## 17 Creslin Terrace CAMDEN PARK SA

3 1 3

Sited on approx. 916 sqm allotment of one of the prettiest gardens I have seen.

This much loved character home will have instant appeal. Polished floorboards, feature leadlights, ceiling roses, open fireplaces, ducted air conditioning and high ceilings are just some of the features.

There are three double bedrooms or two plus formal dining room, (two with robes) and two with open fire places. The formal lounge boasts a box window and the fabulous new kitchen with granite island bench and stainless steel appliances which adjoins the large family room. Large updated bathroom. Outside is an extensive undercover entertaining area, large brick laundry/utility room & 2nd WC (ideal for when you are entertaining or gardening) plus huge rear workshop and lock up carport with auto roller

**Type** : House  
**Building Size** : 14 sqm  
**Land Size** : 916 sqm  
**View** : <https://www.magain.com.au/property/17-creslin-terrace-camden-park-sa/842156>  
4

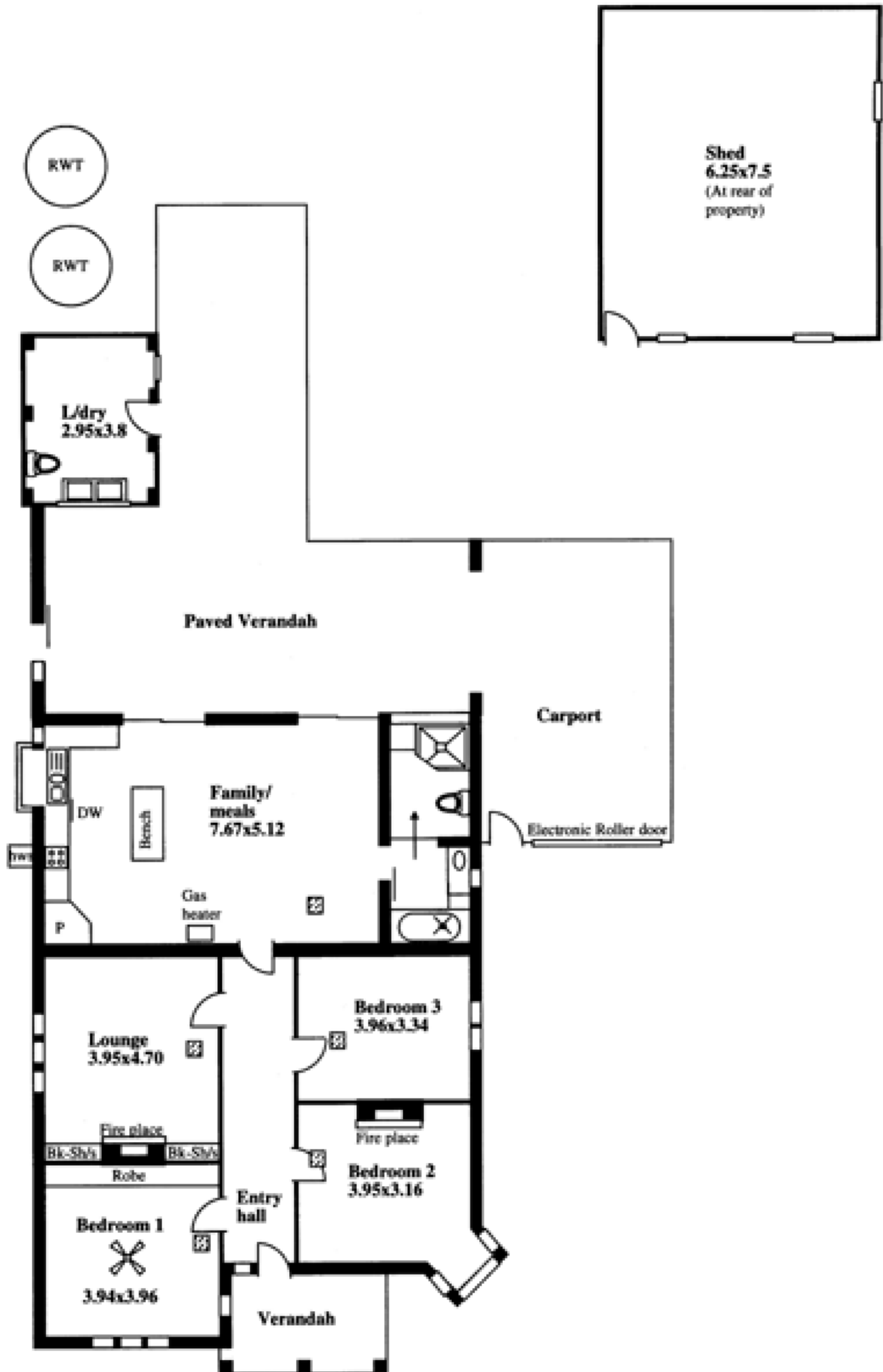


**Jane Nelson**  
08 8277 1777

[For full version visit the website](https://www.magain.com.au)

<https://www.magain.com.au>  
Magain Real Estate

765 Marion Road Ascot Park SA  
08 8277 1777



RWT

RWT

**Shed**  
6.25x7.5  
(At rear of property)

L/dry  
2.95x3.8

Paved Verandah

Carport

Electronic Roller door

Family/  
meals  
7.67x5.12

Lounge  
3.95x4.70

Bedroom 3  
3.96x3.34

Bedroom 2  
3.95x3.16

Bedroom 1  
3.94x3.96

Entry hall

Verandah

DW

Bench

Gas heater

Fire place

Fire place

Bk-Sh's

Bk-Sh's

Robe

tw

P