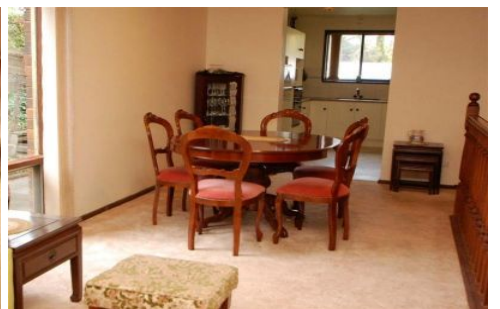


# MAGAIN



## 14 Monalta Drive BELAIR SA

4  2  3 

Sited in a beautiful botanical setting of approx 1392 sqm close to a reserve and the local primary school and transport, this split level home offers real character throughout.

On entering, step up to the formal lounge and dining room and on to the large updated kitchen with dishwasher, which overlooks the spacious family room with picture windows and sliding door to the rear entertaining area.

There are four bedrooms with robes and ensuite to main and a small study area - ideal for the computer!

The roof has been re-pointed & re-painted, there is a double carport and a huge rear powered workshop.

This property offers the ideal opportunity to reside in this prestige location and add your own touches as required.

**Type** : House  
**Building Size** : 20 sqm  
**Land Size** : 1392 sqm  
**View** : <https://www.magain.com.au/property/14-monalta-drive-belair-sa/8421580>

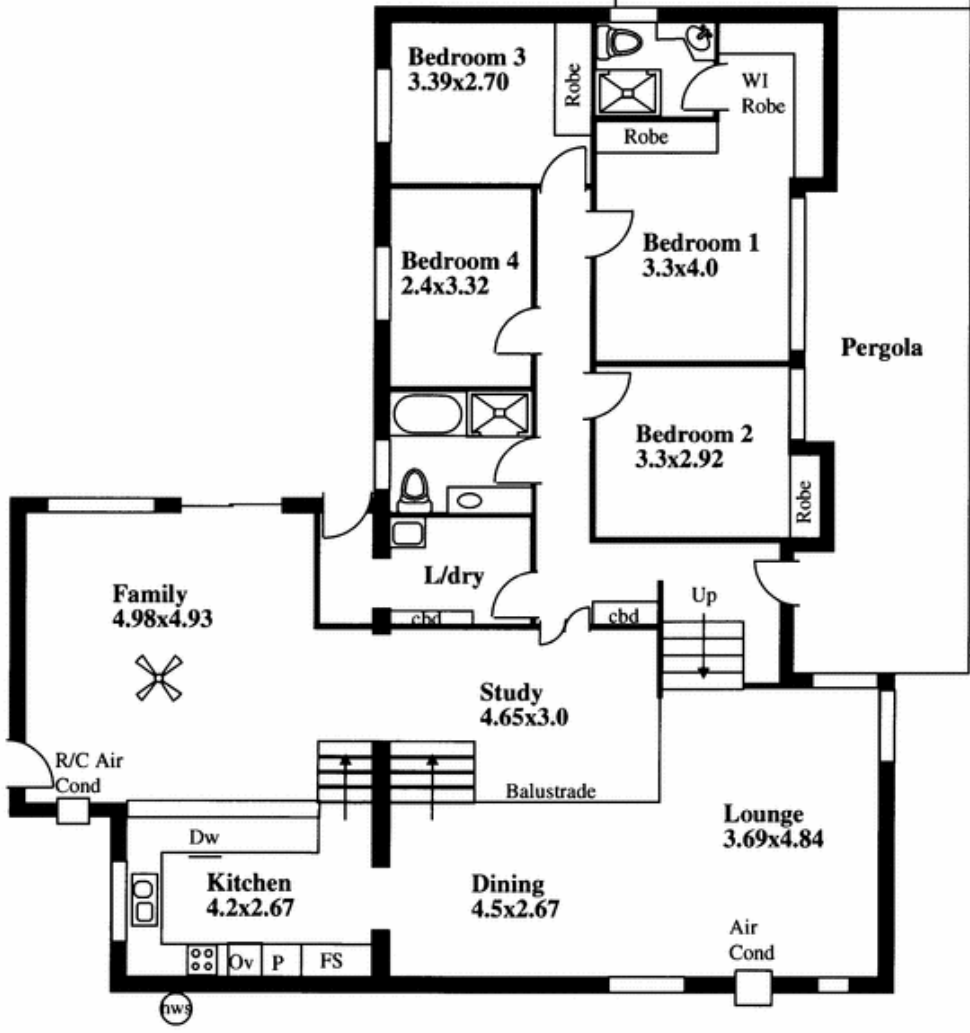


**Jane Nelson**  
08 8277 1777

Garden Shed

Carport

Shed  
6.0x5.0



Pergola