

# MAGAIN



## 1 Plover Street SEAFORD RISE SA

4  2  4 

Peacefully and ideally situated on a generous corner allotment close to schools, shops, facilities, Southern Expressway and just a short stroll to Moana beach, this fine home deserves every ounce of your attention.

Boasting an array of extras, the home has plenty of kerbside appeal and comprises four bedrooms (master with ensuite and wirs), formal lounge, family room, dining and spacious and practical wet areas - all boasting impressive decor and fixtures.

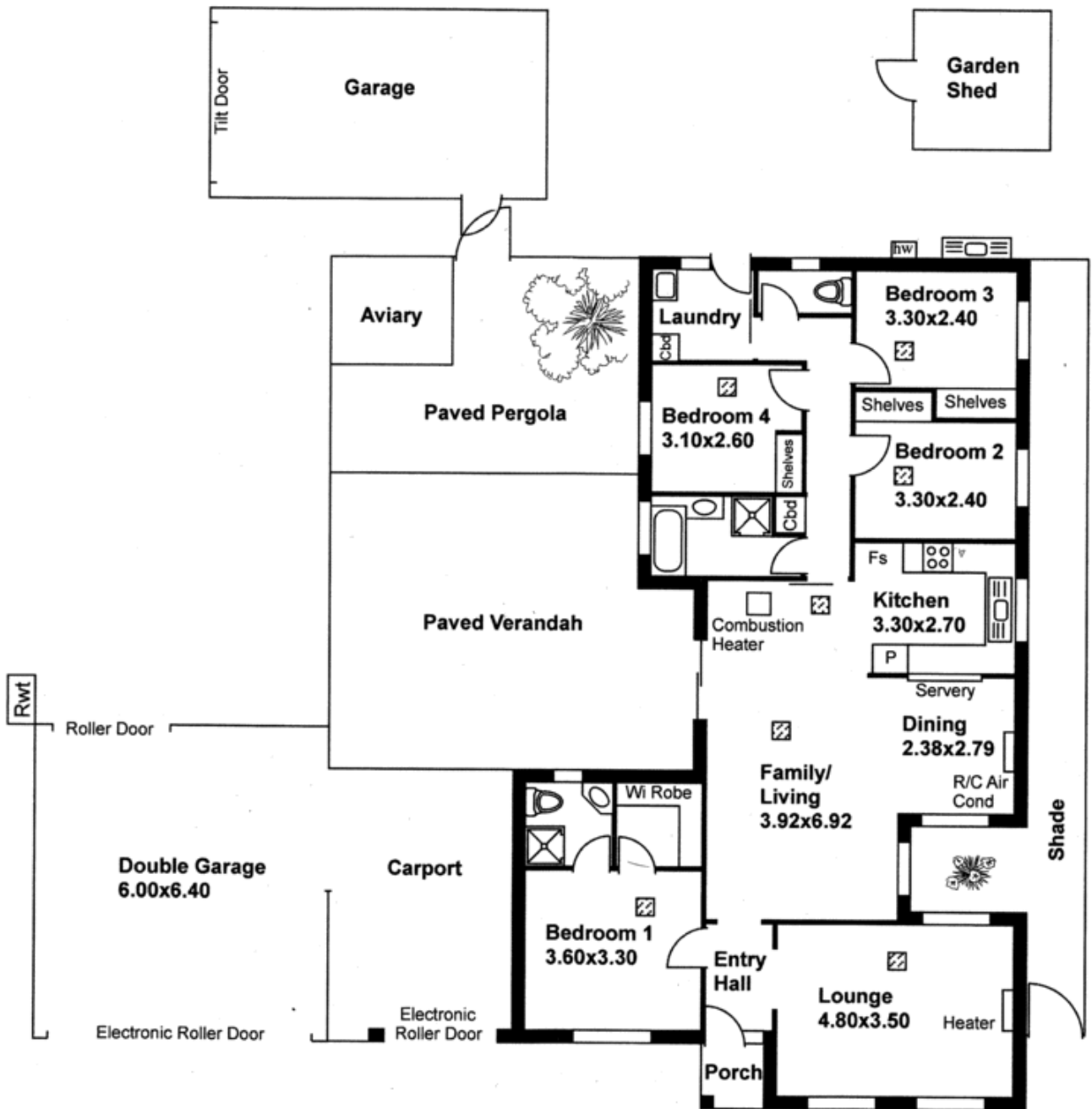
Externally the home features great all-weather entertaining, four lockup garages (with side street access for boats/caravans), toolshed and low maintenance gardens.

**Type** : House  
**Price** : \$ 345,000  
**Building Size** : 16 sqm  
**Land Size** : 655 sqm  
**View** : <https://www.magain.com.au/property/1-plover-street-seaford-rise-sa/8421684>

[For full version visit the website](https://www.magain.com.au)

<https://www.magain.com.au>  
Magain Real Estate

765 Marion Road Ascot Park SA  
08 8277 1777



**LEGEND**  
 [Hatched Box] Air cond ducts