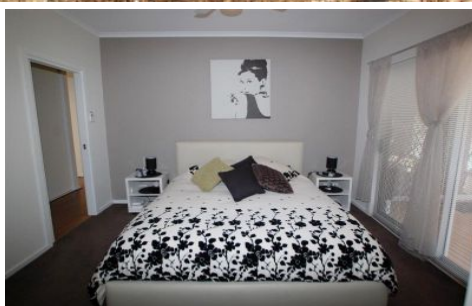


MAGAIN



13 Enginehouse Drive SHEIDOW PARK SA

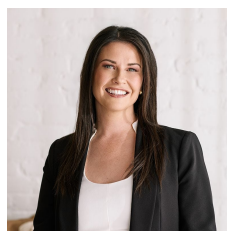
4 2 2

If it is style that you want than this elegant and ultra chic home is the one for you! Situated in the heart of Sheidow Park and close to all amenities including schools, shops, transport and even the beach you can't ask for more than this home has to offer. Built on a large corner block in 2006 this property boasts 4 sizeable bedrooms all with built in robes, master suite complete with balcony access offers very fashionable and roomy his' and her' walk in robes leading through to the splendid double sink ensuite.

With quality shown throughout this home you will find all the must haves are here. The stunning and spacious kitchen with stainless steel Kleenmaid appliances, plenty of cupboard and functional bench space overlooks the casual living area and dine, stylish downlights and floating floors

[For full version visit the website](https://www.magain.com.au/property/13-enginehouse-drive-sheidow-park-sa/8421721)

Type : House
Building Size : 24 sqm
Land Size : 650 sqm
View : <https://www.magain.com.au/property/13-enginehouse-drive-sheidow-park-sa/8421721>



Danielle Comer
08 8322 6111

