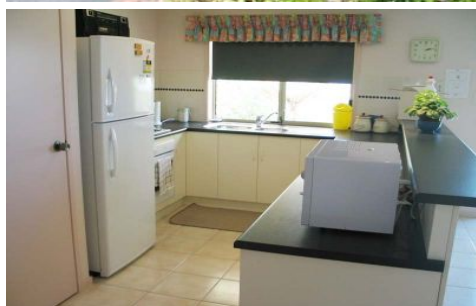


MAGAIN



15 Gleneyre Court ABERFOYLE PARK SA

3  1 

Built in 2003 and sited in quiet yet handy cul-de-sac amongst other quality homes, this beautifully established property is an opportunity to just move in and enjoy. Why go through the headaches of building?

Offering a North facing formal lounge with bay window, three good sized bedrooms, master with ensuite and walk in robe and sliding door to the rear undercover patio - the ideal place to enjoy your morning coffee!

The modern kitchen and open plan dine and family room have lovely rear hills views.

Other features include ducted reverse cycle air conditioning, double garage with auto door and internal access and beautifully landscaped level gardens. You will not be disappointed!

Type : House
Price : \$ 335,000
Building Size : 18 sqm
Land Size : 450 sqm
View : <https://www.magain.com.au/property/15-gleneyre-court-aberfoyle-park-sa/8421751>



Jane Nelson
08 8277 1777

