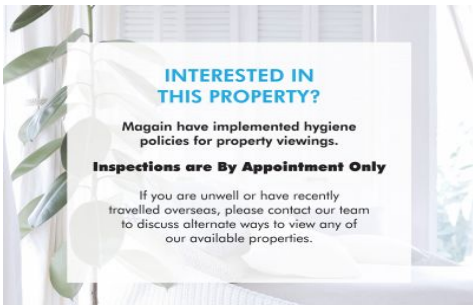


MAGAIN



21 Westall Avenue FLINDERS PARK SA

3 1 3

Inspection by appointment only by calling Jane Nelson 0418820655 Please enjoy our 3D video tour.

This one owner much loved Art Deco style home Circa 1952 sited on easy care allotment, is an absolute pleasure to present. Boasting high ornate ceilings and in a delightful location adjoining a small park and close to Flinders Park Primary School, it offers a rare opportunity in this sought after location.

The wide entrance with laminated flooring leads through to the formal lounge with slow combustion heating and also to the spacious master bedroom with robes. Both have picture windows to the front gardens. There are two further bedrooms (one is double), loads of extra built ins throughout plus ducted reverse cycle air conditioning.

[For full version visit the website](https://www.magain.com.au)

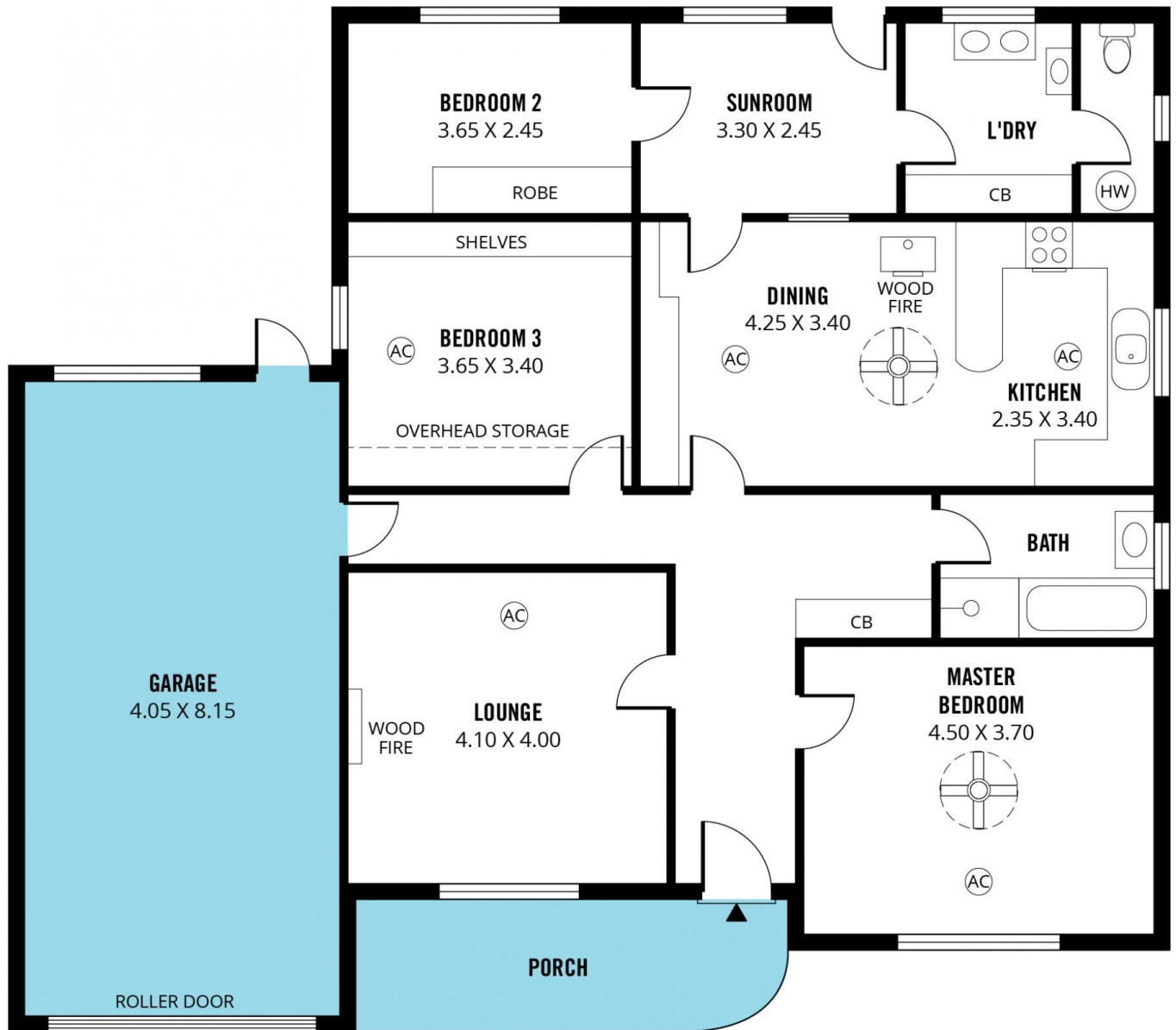
Type : House
Building Size : 13 sqm
Land Size : 407 sqm
View : <https://www.magain.com.au/property/21-westall-avenue-flinders-park-sa/8421835>



Jane Nelson
08 8277 1777

<https://www.magain.com.au>
Magain Real Estate

765 Marion Road Ascot Park SA
08 8277 1777



Scale in metres. This drawing is for illustration purposes only. All measurements are approximate and details intended to be relied upon should be independently verified. Produced by **The Fotobase Group**